

# HLA-F antibody



Catalog Number: 111431

## Product name

HLA-F antibody

## Specificity

Human, Mouse; other species not tested.

## Antibody description

HLA-F Rabbit Polyclonal antibody. Positive WB detected in Raji cells, A431 cells, human placenta tissue, Jurkat cells, mouse spleen tissue. Observed molecular weight by Western-blot: 50kd,66-70kd

## Preparation

This antibody was obtained by immunization of Peptide (Accession Number: NM\_018950). Purification method: Antigen affinity purified.

## Formulation

PBS with 0.02% sodium azide and 50% glycerol pH 7.3.

## Storage

Store at -20°C. DO NOT ALIQUOT

## Clonality

Polyclonal

## Ig Type

Rabbit IgG

## Applications

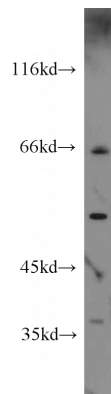
ELISA, WB

## Dilutions

Recommended Dilution:

WB: 1:500-1:5000

## Validations



Raji cells were subjected to SDS PAGE followed by western blot with Catalog No:111431(HLA-F antibody) at dilution of 1:1000