

# CD36 antibody

Catalog Number: 109031

## Product name

CD36 antibody

## Specificity

Human, Mouse; other species not tested.

## Antibody description

CD36 Rabbit Polyclonal antibody. Positive IHC detected in human spleen tissue, human heart tissue. Positive FC detected in RAW 264.7 cells. Positive WB detected in RAW 264.7 cells, HeLa cells, HepG2 cells, HL-60 cells, mouse liver tissue, mouse spleen tissue, RAW264.7 cells. Observed molecular weight by Western-blot: 88 kDa

## Preparation

This antibody was obtained by immunization of Peptide (Accession Number: XM\_047421047). Purification method: Antigen affinity purified.

## Formulation

PBS with 0.02% sodium azide and 50% glycerol pH 7.3.

## Storage

Store at -20°C. DO NOT ALIQUOT

## Clonality

Polyclonal

## Ig Type

Rabbit IgG

## Applications

ELISA, WB, FC, IHC

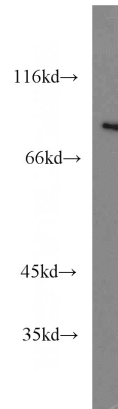
## Dilutions

Recommended Dilution:

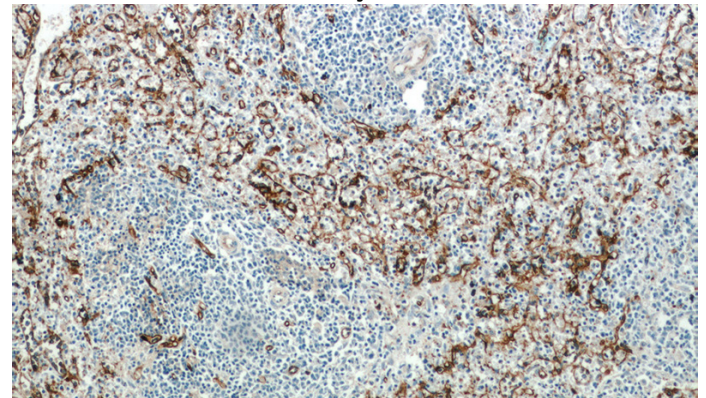
WB: 1:200-1:2000

IHC: 1:20-1:200

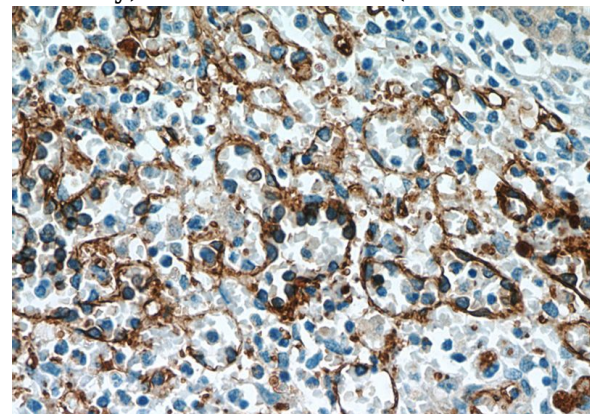
## Validations



RAW264.7 cells were subjected to SDS PAGE followed by western blot with Catalog No:109031(CD36 antibody) at dilution of 1:500



Immunohistochemical of paraffin-embedded human spleen using Catalog No:109031(CD36 antibody) at dilution of 1:50 (under 10x lens)

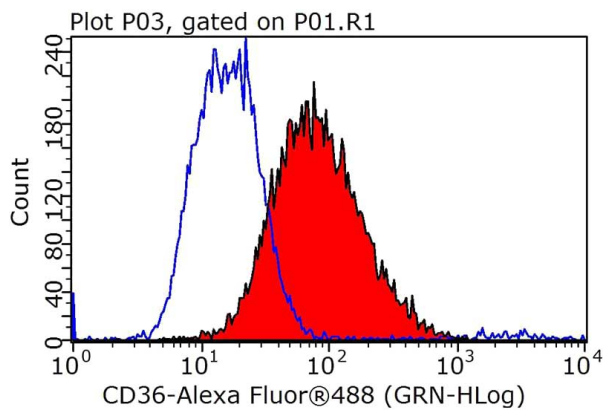


Immunohistochemical of paraffin-embedded human spleen using Catalog No:109031(CD36 antibody) at dilution of 1:50 (under 40x lens)

# CD36 antibody



Catalog Number: 109031



1X10<sup>6</sup> RAW 264.7 cells were stained with 0.2ug CD36 antibody (Catalog No:109031, red) and control antibody (blue). Fixed with 90% MeOH blocked with 3% BSA (30 min). Alexa Fluor 488-conjugated AffiniPure Goat Anti-Rabbit IgG(H+L) with dilution 1:1000.