

# Anti-PIP antibody

Catalog Number: 106031

## Product name

Anti-PIP antibody

## Specificity

Human PIP

## Antibody description

Rabbit polyclonal to PIP

## Preparation

Produced in rabbits immunized with A synthetic peptide corresponding to the N-terminus of the human GCDFP-15 , and purified by antigen affinity chromatography.

## Formulation

0.2 µm filtered solution in PBS

## Storage

This antibody can be stored at 2°C-8°C for one month without detectable loss of activity. Antibody products are stable for twelve months from date of receipt when stored at -20°C to -80°C.

Preservative-Free.

Sodium azide is recommended to avoid contamination (final concentration 0.05%-0.1%). It is toxic to cells and should be disposed of properly. Avoid repeated freeze-thaw cycles.

## Clonality

Polyclonal

## Ig Type

Rabbit IgG

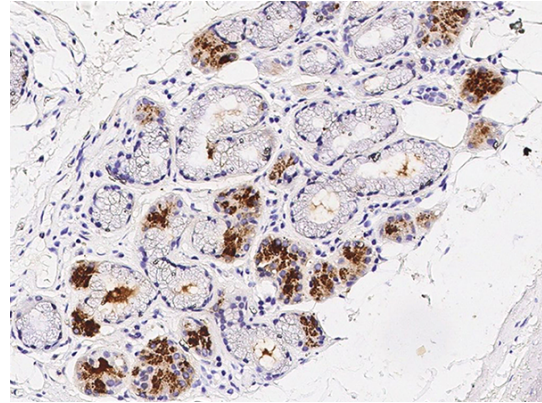
## Applications

IHC-P

## Dilutions

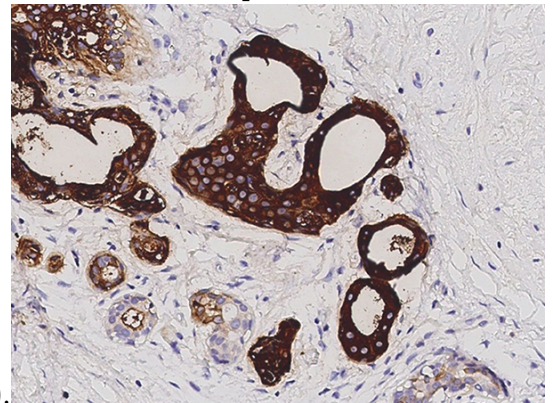
IHC-P: 0.1-1 µg/mL

## Validations



GCDFP-15 Antibody, Rabbit PAb, Antigen Affinity Purified, Immunohistochemistry

Immunochemical staining of human GCDFP15 in human trachea with rabbit polyclonal antibody (0.2 µg/mL, formalin-fixed paraffin embedded



sections).

GCDFP-15 Antibody, Rabbit PAb, Antigen Affinity Purified, Immunohistochemistry

Immunochemical staining of human GCDFP15 in human breast carcinoma with rabbit polyclonal antibody (0.2 µg/mL, formalin-fixed paraffin embedded sections).