

CTDSP2 antibody



Catalog Number: 109721

Product name

CTDSP2 antibody

Specificity

human; other species not tested.

Antibody description

CTDSP2 Rabbit Polyclonal antibody. Positive WB detected in human kidney tissue, HepG2 cells, K-562 cells. Positive IHC detected in human pancreas cancer. Observed molecular weight by Western-blot: 31 kDa

Preparation

This antibody was obtained by immunization of CTDSP2 recombinant protein (Accession Number: NM_005730). Purification method: Antigen affinity purified.

Formulation

PBS with 0.1% sodium azide and 50% glycerol pH 7.3.

Storage

Store at -20°C. DO NOT ALIQUOT

Clonality

Polyclonal

Ig Type

Rabbit IgG

Applications

ELISA, WB, IHC

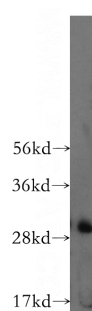
Dilutions

Recommended Dilution:

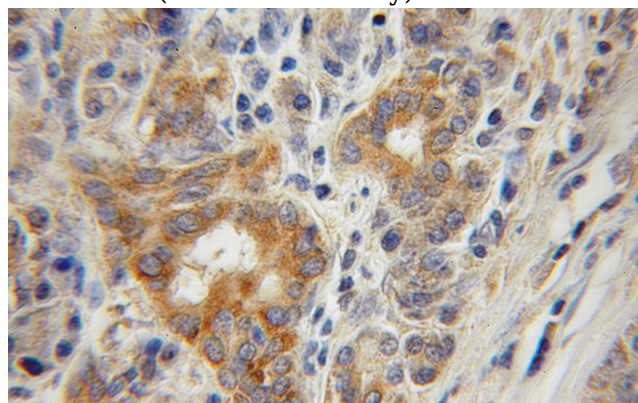
WB: 1:200-1:1000

IHC: 1:20-1:200

Validations



human kidney tissue were subjected to SDS PAGE followed by western blot with Catalog No:109721(CTDSP2 antibody) at dilution of 1:400



Immunohistochemical of paraffin-embedded human pancreas cancer using Catalog No:109721(CTDSP2 antibody) at dilution of 1:50 (under 10x lens)