

# Anti-PLN antibody



Catalog Number: 176721

## Product name

Anti-PLN antibody

## Specificity

Human, Mouse, Rat

## Antibody description

Mouse monoclonal antibody to PLN

## Preparation

This antigen of this antibody was specific for an epitope mapping between amino acids 7-32 at the n-terminus of phospholamban of human origin.

## Formulation

Liquid, 1\*TBS (pH7.4), 1%BSA. Preservative: 0.05% Sodium Azide.

## Storage

Store at +4°C.

## Clonality

Monoclonal

## Ig Type

Mouse IgG1

## Applications

WB, IP, IF

## Dilutions

WB: 1:100-1:1,000

IP: 1-2 µg per 100-500 µg of total protein(1 ml of cell lysate)

IF: 1:50-1:500

## Validations

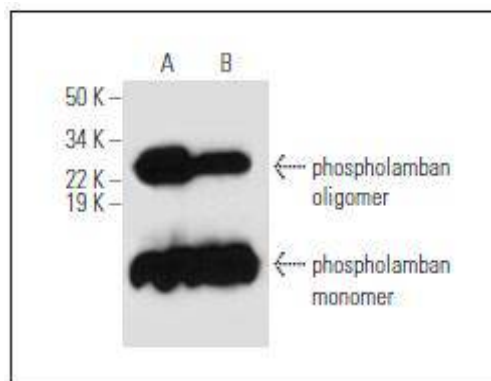


Fig1: Western blot analysis of phospholamban expression in mouse heart (A) and human heart (B) tissue extracts.