

# Anti-Ephrin-A1/EFNA1 antibody



Catalog Number: 100721

## Product name

Anti-Ephrin-A1/EFNA1 antibody

## Immunogen

[Human Ephrin-A1/EFNA1 \(His Tag\) recombinant protein](#)

## Specificity

Human Ephrin-A1 / EFNA1

## Antibody description

Rabbit monoclonal to Ephrin-A1/EFNA1

## Preparation

This antibody was obtained from a rabbit immunized with purified, recombinant Human Ephrin-A1 / EFNA1 (rh Ephrin-A1 / EFNA1; NP\_004419.2; Met1-Ser182).

## Formulation

0.2 µm filtered solution in PBS with 5% trehalose

## Storage

This antibody can be stored at 2°C-8°C for one month without detectable loss of activity. Antibody products are stable for twelve months from date of receipt when stored at -20°C to -80°C.

Preservative-Free.

Sodium azide is recommended to avoid contamination (final concentration 0.05%-0.1%). It is toxic to cells and should be disposed of

properly. Avoid repeated freeze-thaw cycles.

## Clonality

Monoclonal

## Ig Type

Rabbit IgG

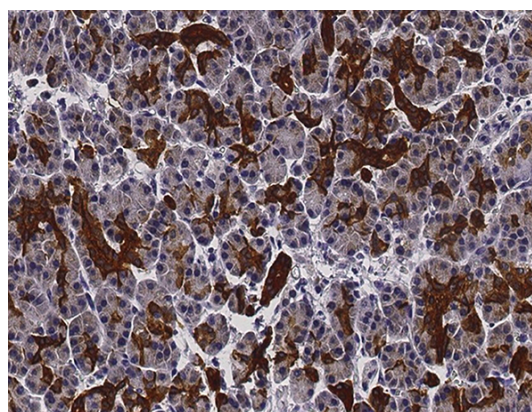
## Applications

IHC-P

## Dilutions

IHC-P: 1-10 µg/mL

## Validations



Ephrin-A1 / EFNA1 Antibody, Rabbit MAb, Immunohistochemistry

Immunochemical staining of human EFNA1 in human pancreas with rabbit monoclonal antibody (5 µg/mL, formalin-fixed paraffin embedded sections).