

# ATPAF2 antibody



Catalog Number: 108321

## Product name

ATPAF2 antibody

## Specificity

Human, Mouse, Rat; other species not tested.

## Antibody description

ATPAF2 Rabbit Polyclonal antibody. Positive IHC detected in human colon cancer tissue. Positive WB detected in HEK-293 cells. Observed molecular weight by Western-blot: 33 kDa

## Preparation

This antibody was obtained by immunization of ATPAF2 recombinant protein (Accession Number: NM\_145691). Purification method: Antigen affinity purified.

## Formulation

PBS with 0.1% sodium azide and 50% glycerol pH 7.3.

## Storage

Store at -20°C. DO NOT ALIQUOT

## Clonality

Polyclonal

## Ig Type

Rabbit IgG

## Applications

ELISA, WB, IHC

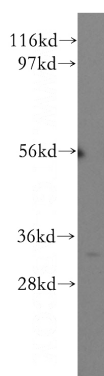
## Dilutions

Recommended Dilution:

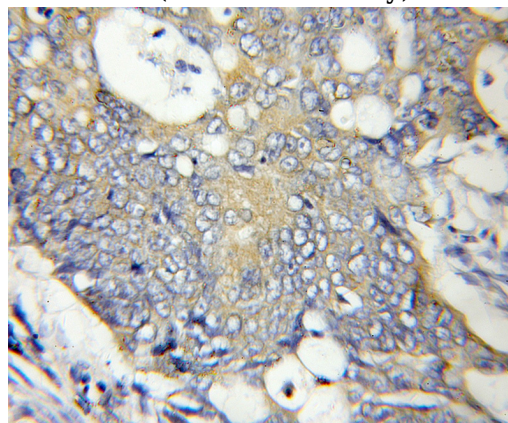
WB: 1:200-1:2000

IHC: 1:20-1:200

## Validations



HEK-293 cells were subjected to SDS PAGE followed by western blot with Catalog No:108321(ATPAF2 antibody) at dilution of 1:500



Immunohistochemical of paraffin-embedded human colon cancer using Catalog No:108321(ATPAF2 antibody) at dilution of 1:50 (under 10x lens)