

SLC25A10 antibody



Catalog Number: 115321

Product name

SLC25A10 antibody

Immunogen

[Human SLC25A10 Recombinant protein \(His tag\)](#)

Specificity

Human, Mouse, Rat; other species not tested.

Antibody description

SLC25A10 Rabbit Polyclonal antibody. Positive IP detected in mouse liver tissue. Positive WB detected in mouse liver tissue, mouse kidney tissue. Observed molecular weight by Western-blot: 31 kDa

Preparation

This antibody was obtained by immunization of SLC25A10 recombinant protein (Accession Number: NM_001270888). Purification method: Antigen affinity purified.

Formulation

PBS with 0.02% sodium azide and 50% glycerol pH 7.3.

Storage

Store at -20°C. DO NOT ALIQUOT

Clonality

Polyclonal

Ig Type

Rabbit IgG

Applications

ELISA, WB, IP

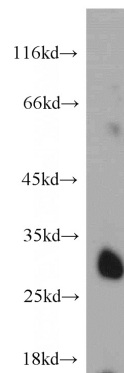
Dilutions

Recommended Dilution:

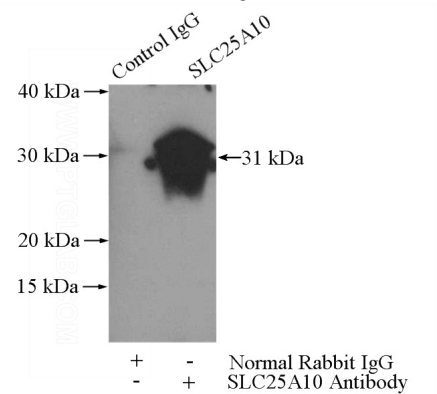
WB: 1:200-1:2000

IP: 1:200-1:2000

Validations



mouse liver tissue were subjected to SDS PAGE followed by western blot with Catalog No:115321(SLC25A10 antibody) at dilution of



1:500

IP Result of anti-SLC25A10 (IP:Catalog No:115321, 3ug; Detection:Catalog No:115321 1:500) with mouse liver tissue lysate 4000ug.