

General Information

Gene Name Synonym

Cytosolic malate dehydrogenase

Protein Construction

A DNA sequence encoding the rat MDH1 (O88989) (Met 4-Ala 334) was expressed with a polyhistidine tag at the C-terminus.

Organism

Rat

Expression Host

E. coli

QC Testing

Purity

> 90 % as determined by SDS-PAGE

Endotoxin

Please contact us for more information.

Stability

Samples are stable for up to twelve months from date of receipt at -70°C

Predicted N terminal

Met 1

Molecular Mass

The recombinant rat MDH1 comprises 345 amino acids and predicts a molecular mass of 38 kDa.

The apparent molecular mass of the rat MDH1 is approximately 39 kDa in SDS-PAGE under reducing conditions.

Formulation

Lyophilized from sterile 20mM Tris, 10% glycerol, pH 8.0

1. 5 % trehalose and mannitol are added as protectants before lyophilization.
2. Please contact us for any concerns or special requirements.

Usage Guide

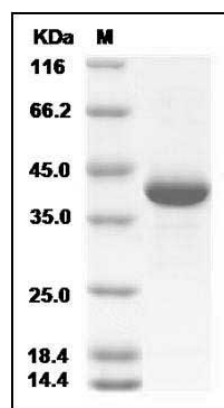
Storage

Store it under sterile conditions at -20°C to -80°C. It is recommended that the protein be aliquoted for optimal storage. Avoid repeated freeze-thaw cycles.

Reconstitution

Adding sterile water, prepare a stock solution of 0.25 mg/ml. Concentration is measured by UV-Vis.

SDS-PAGE



Rat MDHA / MDH1 Protein (His Tag) SDS-PAGE