

Anti-RSK3/RPS6KA2 antibody



Catalog Number: 101321

Product name

Anti-RSK3/RPS6KA2 antibody

Specificity

Human RSK3 / RPS6KA2

Antibody description

Rabbit polyclonal to RSK3/RPS6KA2

Preparation

Produced in rabbits immunized with a synthetic peptide corresponding to the center region of the Human RSK3 / RPS6KA2, and purified by antigen affinity chromatography.

Formulation

0.2 µm filtered solution in PBS

Storage

This antibody can be stored at 2°C-8°C for one month without detectable loss of activity. Antibody products are stable for twelve months from date of receipt when stored at -20°C to -80°C. Preservative-Free.

Sodium azide is recommended to avoid contamination (final concentration 0.05%-0.1%). It is toxic to cells and should be disposed of properly. Avoid repeated freeze-thaw cycles.

Clonality

Polyclonal

Ig Type

Rabbit IgG

Applications

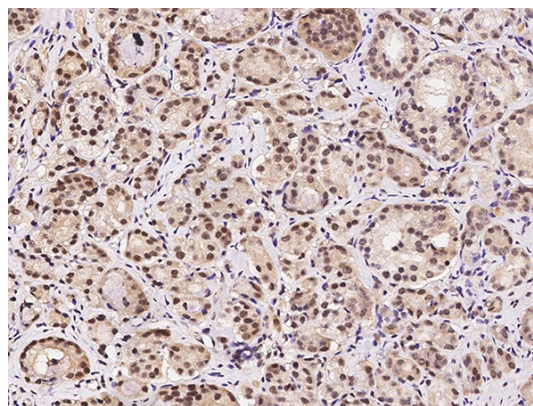
IHC-P, IF, ICC/IF

Dilutions

IHC-P: 0.1-2 µg/mL

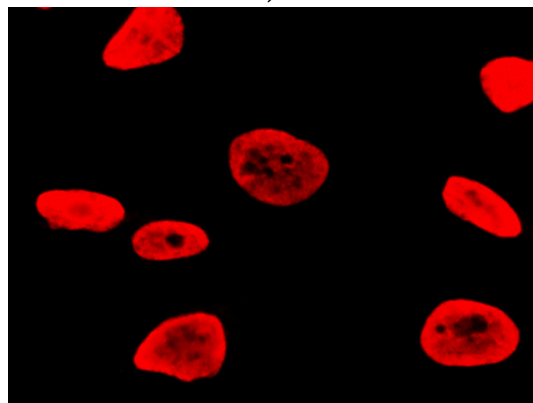
ICC/IF: 1-2.5 µg/mL

Validations



RSK3 / RPS6KA2 Antibody, Rabbit PAb, Antigen Affinity Purified, Immunohistochemistry

Immunochemical staining of human RPS6KA2 in human prostatic carcinoma with rabbit polyclonal antibody (1 µg/mL, formalin-fixed paraffin embedded sections).



RSK3 / RPS6KA2 Antibody, Rabbit PAb, Antigen Affinity Purified, Immunofluorescence

Immunofluorescence staining of RPS6KA2 in HeLa cells. Cells were fixed with 4% PFA, permeabilized with 0.3% Triton X-100 in PBS, blocked with 10% serum, and incubated with rabbit anti-human RPS6KA2 polyclonal antibody (1 µg/ml) at 4°C overnight. Then cells w