

Anti-KYNU antibody



Catalog Number: 141321

Product name

Anti-KYNU antibody

Immunogen

[Human KYNU \(His Tag\) recombinant protein](#)

Specificity

Human KYNU

Antibody description

Rabbit Monoclonal to Human KYNU

Preparation

This antibody was obtained from a rabbit immunized with purified, recombinant Human KYNU .

Formulation

0.2 µm filtered solution in PBS

Storage

This antibody can be stored at 2°C-8°C for one month without detectable loss of activity. Antibody products are stable for twelve months from date of receipt when stored at -20°C to -80°C.

Preservative-Free.

Sodium azide is recommended to avoid contamination (final concentration 0.05%-0.1%). It is toxic to cells and should be disposed of properly. Avoid repeated freeze-thaw cycles.

Clonality

Monoclonal

Ig Type

Rabbit IgG

Applications

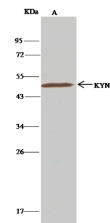
WB, IP

Dilutions

WB: 5-20 µg/ml

IP: 1-4 µg/mg of lysate

Validations



Items	Lanes	A
Sample (whole cell lysate)		A549
Sample quantity		0.5 mg
IP antibody quantity		2 µg
Protein G agarose		15 µl of 50% Protein G agarose
Gel		13% SDS-PAGE reducing gel
Primary antibody		KYNU-His antibody at 10 µg/ml
Secondary antibody		Cleav-Block IP Detection Reagent (IBP) at 1:500 dilution

Human KYNU Immunoprecipitation(IP) 16045



Items	Lanes	A
Sample (whole cell lysate)		A549
Sample Volume (µg/lane)		30
Cell		13% SDS-PAGE reducing gel
Recommended Concentration		5-20 µg/ml
Secondary Antibody		Dylight 800-labeled Antibody To Rabbit IgG (H+L), at 1:5000 dilution.
Developed using Odyssey imaging system.		
Explanation		Predicted band size : 52 kDa Observed band size : 52 kDa

Human KYNU Western blot (WB) 14851