

ENOX2 antibody

Catalog Number: 110321

Product name

ENOX2 antibody

IP: 1:200-1:2000

IHC: 1:20-1:200

Specificity

Human, Mouse; other species not tested.

Antibody description

ENOX2 Rabbit Polyclonal antibody. Positive IP detected in MCF-7 cells. Positive WB detected in MCF-7 cells, HeLa cells, mouse ovary tissue, PC-3 cells. Positive IHC detected in human ovary tumor tissue. Observed molecular weight by Western-blot: 70 kDa

Preparation

This antibody was obtained by immunization of ENOX2 recombinant protein (Accession Number: BC019254). Purification method: Antigen affinity purified.

Formulation

PBS with 0.1% sodium azide and 50% glycerol pH 7.3.

Storage

Store at -20°C. DO NOT ALIQUOT

Clonality

Polyclonal

Ig Type

Rabbit IgG

Applications

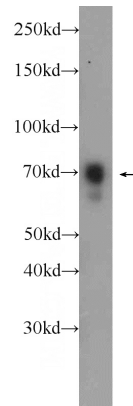
ELISA, IHC, WB, IP

Dilutions

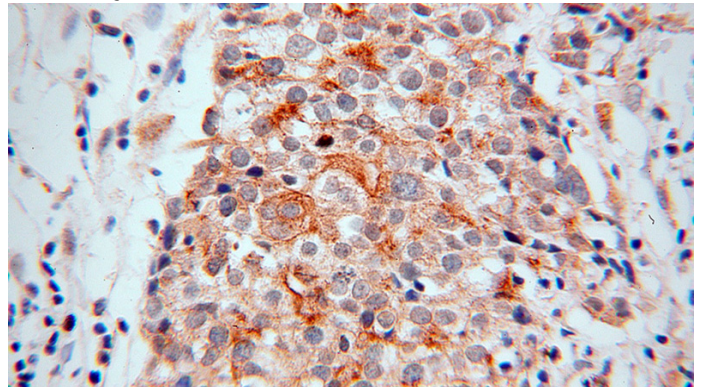
Recommended Dilution:

WB: 1:500-1:5000

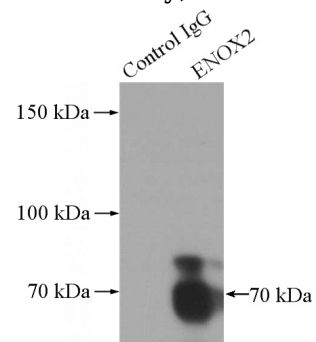
Validations



MCF-7 cells were subjected to SDS PAGE followed by western blot with Catalog No:110321(ENOX2 Antibody) at dilution of 1:1000



Immunohistochemical of paraffin-embedded human ovary tumor using Catalog No:110321(ENOX2 antibody) at dilution of 1:100



(under 40x lens)

+	-	Normal Rabbit IgG
-	+	ENOX2 Antibody

IP Result of anti-ENOX2 (IP:Catalog No:110321, 3ug; Detection:Catalog No:110321 1:700) with

ENOX2 antibody



Catalog Number: 110321

MCF-7 cells lysate 4000ug.