

ST2 antibody

Catalog Number: 115621

Product name

ST2 antibody

Specificity

Human, Mouse, Rat; other species not tested.

Antibody description

ST2 Rabbit Polyclonal antibody. Positive WB detected in mouse brain tissue. Positive IHC detected in human lung cancer tissue, human heart tissue. Observed molecular weight by Western-blot: 30 kDa, 40 kDa

Preparation

This antibody was obtained by immunization of ST2 recombinant protein (Accession Number: NM_003856). Purification method: Antigen affinity purified.

Formulation

PBS with 0.1% sodium azide and 50% glycerol pH 7.3.

Storage

Store at -20°C. DO NOT ALIQUOT

Clonality

Polyclonal

Ig Type

Rabbit IgG

Applications

ELISA, WB, IHC

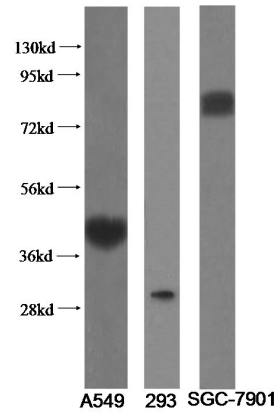
Dilutions

Recommended Dilution:

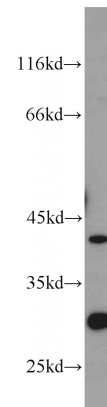
WB: 1:500-1:5000

IHC: 1:50-1:500

Validations

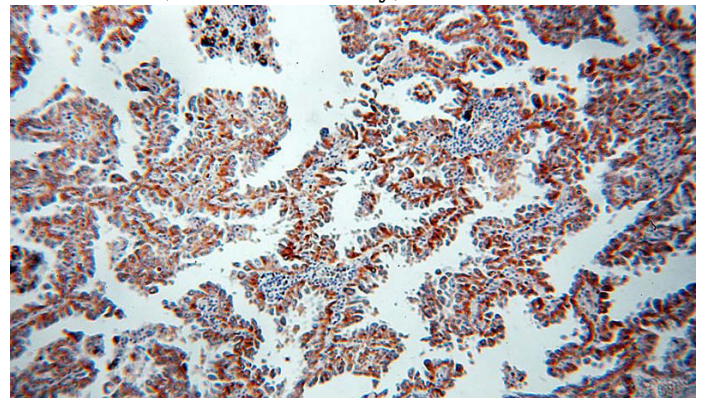


Variants of IL1RL1 recognized by Catalog



No:115621.

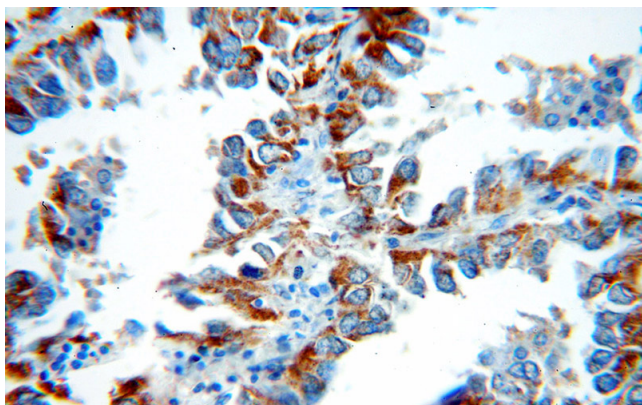
mouse brain tissue were subjected to SDS PAGE followed by western blot with Catalog No:115621(IL1RL1 antibody) at dilution of 1:1000



Immunohistochemical of paraffin-embedded human lung cancer using Catalog No:115621(IL1RL1 antibody) at dilution of 1:50 (under 10x lens)

ST2 antibody

Catalog Number: 115621



Immunohistochemical of paraffin-embedded human lung cancer using Catalog No:115621(IL1RL1 antibody) at dilution of 1:50 (under 40x lens)