

# Human PLK1/PLK-1 (His Tag) recombinant protein



Catalog Number: 502621

## General Information

### Gene Name Synonym

Polo-like kinase 1; Serine/threonine-protein kinase 13

### Protein Construction

A DNA sequence encoding the human PLK1 (NP\_005021.2) (Met 1-Ser 603) was expressed, with a polyhistidine tag at the N-terminus.

### Organism

Human

### Expression Host

Baculovirus-Insect Cells

## QC Testing

### Activity

The specific activity was determined to be 5 nmol/min/mg using casein as substrate.

### Purity

> 90 % as determined by SDS-PAGE

### Endotoxin

< 1.0 EU per  $\mu\text{g}$  of the protein as determined by the LAL method

### Stability

Samples are stable for up to twelve months from date of receipt at  $-70^{\circ}\text{C}$

### Predicted N terminal

His

## Molecular Mass

The recombinant human PLK1 consists of 621 amino acids and predicts a molecular mass of 70.5 kDa. It migrates as an approximately 66 kDa band in SDS-PAGE under reducing conditions.

## Formulation

Supplied as sterile 50mM Tris, 100mM NaCl, pH 7.4, 0.5mM EDTA, 0.5mM EGTA, 0.5mM PMSF, 25% glycerol

1. 5 % trehalose and mannitol are added as protectants before lyophilization.

2. Please contact us for any concerns or special requirements.

## Usage Guide

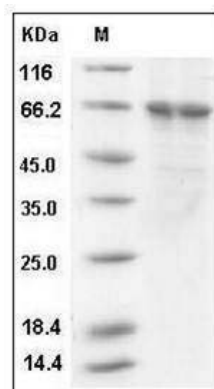
### Storage

Store it under sterile conditions at  $-20^{\circ}\text{C}$  to  $-80^{\circ}\text{C}$ . It is recommended that the protein be aliquoted for optimal storage. Avoid repeated freeze-thaw cycles.

### Reconstitution

Adding sterile water, prepare a stock solution of 0.25 mg/ml. Concentration is measured by UV-Vis.

## SDS-PAGE



Human PLK1 / PLK-1 Protein (His Tag) SDS-PAGE