

NRBF2 Polyclonal Antibody



Catalog Number: 161621

Product name

NRBF2 Polyclonal Antibody

Specificity

Human, Rat

Antibody description

Polyclonal antibody to NRBF2

Preparation

Antigen: Recombinant fusion protein containing a sequence corresponding to amino acids 10-220 of human NRBF2 (NP_110386.2).

Formulation

PBS with 0.02% sodium azide, 50% glycerol, pH7.3.

Storage

Store at -20°C. Avoid freeze / thaw cycles.

Clonality

Polyclonal

Ig Type

Rabbit IgG

Applications

WB, IHC, IF

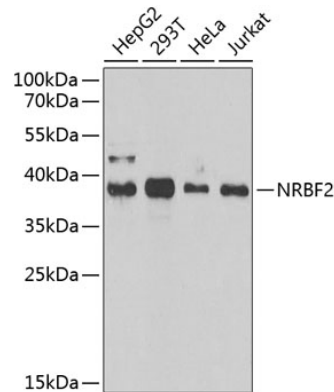
Dilutions

WB 1:500 - 1:2000

IHC 1:50 - 1:200

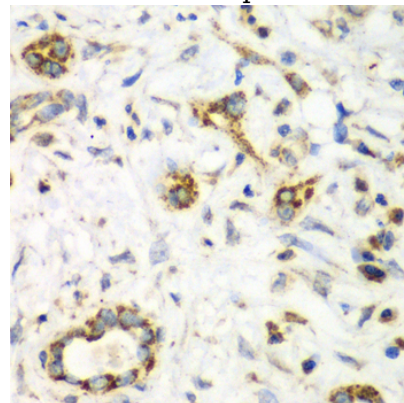
IF 1:50 - 1:200

Validations



Western blot - NRBF2 Polyclonal Antibody

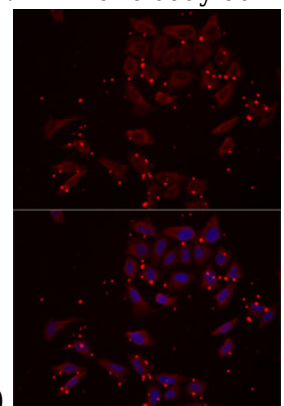
Western blot analysis of extracts of various cell lines, using NRBF2 antibody at 1:1000 dilution. Secondary antibody: HRP Goat Anti-Rabbit IgG (H+L) at 1:10000 dilution. Lysates/proteins: 25ug per lane. Blocking buffer: 3% nonfat dry milk in TBST. Detection: ECL Enhanced Kit. Exposure time: 90s.



Immunohistochemistry - NRBF2 Polyclonal Antibody

Immunohistochemistry of paraffin-embedded human liver cancer using NRBF2 antibody at

dilution of 1:100 (40x lens).



NRBF2 Polyclonal Antibody



Catalog Number: 161621

Immunofluorescence - NRBF2 Polyclonal Antibody

Immunofluorescence analysis of MCF7 cells using NRBF2 antibody . Blue: DAPI for nuclear staining.