

ASF/SF2 antibody



Catalog Number: 108221

Product name

ELISA, WB, IP

ASF/SF2 antibody

Dilutions

Specificity

Recommended Dilution:

Human, Mouse, Rat; other species not tested.

WB: 1:500-1:5000

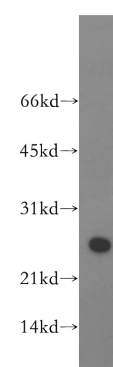
IP: 1:200-1:2000

Antibody description

Validations

ASF/SF2 Rabbit Polyclonal antibody. Positive IP detected in mouse brain tissue. Positive WB detected in human brain tissue, HeLa cells, human ileum tissue, human placenta tissue, mouse brain tissue. Observed molecular weight by Western-blot: 28kd

Preparation



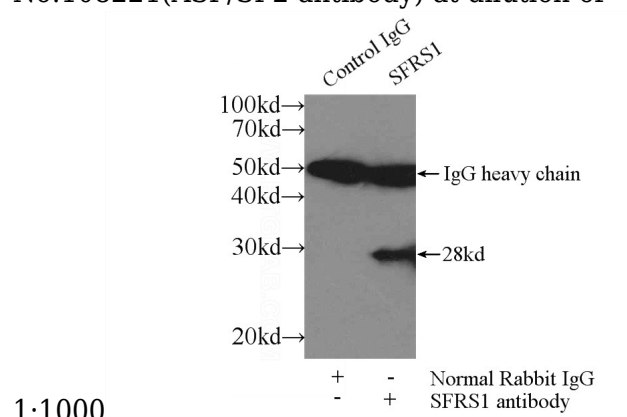
This antibody was obtained by immunization of ASF/SF2 recombinant protein (Accession Number: XM_047436526). Purification method: Antigen affinity purified.

Formulation

human brain tissue were subjected to SDS PAGE followed by western blot with Catalog No:108221(ASF/SF2 antibody) at dilution of

PBS with 0.1% sodium azide and 50% glycerol pH 7.3.

Storage



Store at -20°C. DO NOT ALIQUOT

Clonality

1:1000

Polyclonal

Ig Type

Rabbit IgG

Applications

IP Result of anti-ASF/SF2 (IP:Catalog No:108221, 3ug; Detection:Catalog No:108221 1:500) with mouse brain tissue lysate 3600ug.