

Anti-S100 alpha 6/PRA (3E11) Mouse antibody



Catalog Number: 168221

Product name

Monoclonal

Anti-S100 alpha 6/PRA (3E11) Mouse antibody

Ig Type

Mouse IgG1

Specificity

Human

Applications

WB

Antibody description

S100 alpha 6/PRA (3E11) Mouse monoclonal antibody

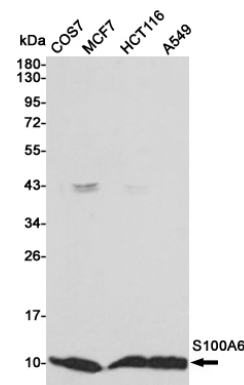
Dilutions

WB: 1/1000

Preparation

Antigen: Purified recombinant human S100A6 protein expressed in E.coli.

Validations



Formulation

Purified mouse monoclonal antibody in PBS(pH 7.4) containing with 0.03% Proclin300 and 50% glycerol.

Storage

Store at 4°C short term. Store at -20°C long term. Avoid freeze / thaw cycle.

Western blot detection of S100A6 in COS7, MCF7, HCT116 and A549 cell lysates using S100A6 mouse mAb (1:1000 diluted). Predicted band size: 10KDa. Observed band size: 10KDa.

Clonality