

# LIFR antibody

Catalog Number: 112221

## Product name

LIFR antibody

Recommended Dilution:

WB: 1:200-1:2000

## Specificity

Human, Mouse; other species not tested.

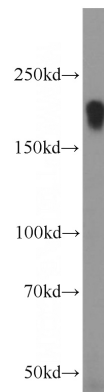
IP: 1:500-1:5000

IHC: 1:20-1:200

## Antibody description

LIFR Rabbit Polyclonal antibody. Positive IP detected in mouse skeletal muscle tissue. Positive WB detected in human skeletal muscle tissue, mouse skeletal muscle tissue. Positive FC detected in HeLa cells. Positive IHC detected in human skeletal muscle tissue, human kidney tissue, human placenta tissue. Observed molecular weight by Western-blot: 190 kDa

## Validations



## Preparation

This antibody was obtained by immunization of LIFR recombinant protein (Accession Number: XM\_011514040). Purification method: Antigen Affinity purified.

human skeletal muscle tissue were subjected to SDS PAGE followed by western blot with Catalog No:112221(LIFR antibody) at dilution of 1:800

## Formulation

PBS with 0.02% sodium azide and 50% glycerol pH 7.3.

## Storage

Store at -20°C. DO NOT ALIQUOT

## Clonality

Polyclonal

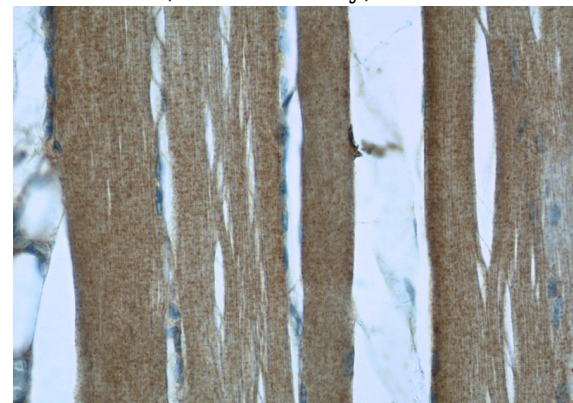
## Ig Type

Rabbit IgG

## Applications

ELISA, WB, IHC, IP, FC

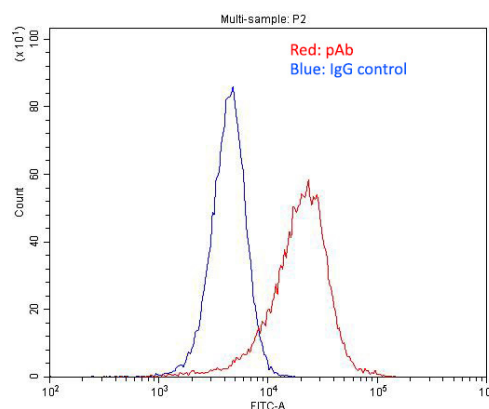
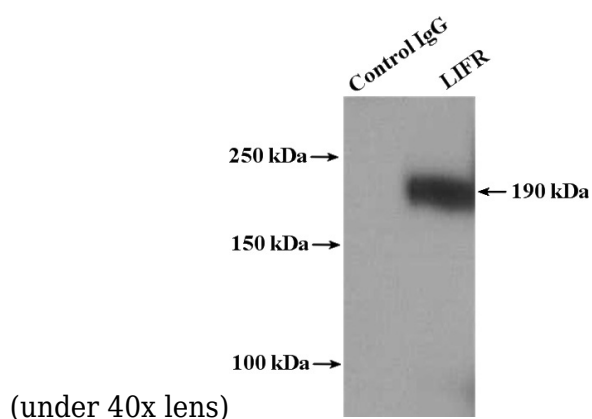
## Dilutions



Immunohistochemistry of paraffin-embedded human skeletal muscle slide using Catalog No:112221(LIFR Antibody) at dilution of 1:50

# LIFR antibody

Catalog Number: 112221



IP Result of anti-LIFR (IP:Catalog No:112221, 4ug; Detection:Catalog No:112221 1:1000) with mouse skeletal muscle tissue lysate 4000ug.

$1 \times 10^6$  HeLa cells were stained with .2ug LIFR antibody (Catalog No:112221, red) and control antibody (blue). Fixed with 4% PFA blocked with 3% BSA (30 min). Alexa Fluor 488-conjugated AffiniPure Goat Anti-Rabbit IgG(H+L) with dilution 1:1500.