

# RRAS2 antibody

Catalog Number: 114921

## Product name

RRAS2 antibody

WB: 1:200-1:2000

IP: 1:200-1:2000

## Specificity

Human, Mouse, Rat; other species not tested.

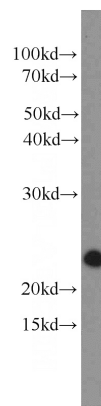
IHC: 1:20-1:200

IF: 1:10-1:100

## Antibody description

RRAS2 Rabbit Polyclonal antibody. Positive IF detected in A431 cells. Positive IHC detected in human lung cancer tissue, human heart tissue. Positive IP detected in NIH/3T3 cells. Positive WB detected in NIH/3T3 cells, mouse pancreas tissue. Observed molecular weight by Western-blot: 23 kDa

## Validations



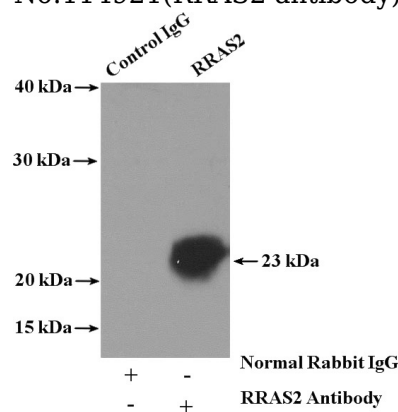
## Preparation

This antibody was obtained by immunization of RRAS2 recombinant protein (Accession Number: NM\_012250). Purification method: Antigen affinity purified.

NIH/3T3 cells were subjected to SDS PAGE followed by western blot with Catalog No:114921(RRAS2 antibody) at dilution of 1:800

## Formulation

PBS with 0.1% sodium azide and 50% glycerol pH 7.3.



## Storage

Store at -20°C. DO NOT ALIQUOT

IP Result of anti-RRAS2 (IP:Catalog No:114921, 4ug; Detection:Catalog No:114921 1:800) with NIH/3T3 cells lysate 4000ug.

## Clonality

Polyclonal

## Ig Type

Rabbit IgG

## Applications

ELISA, WB, IHC, IF, IP

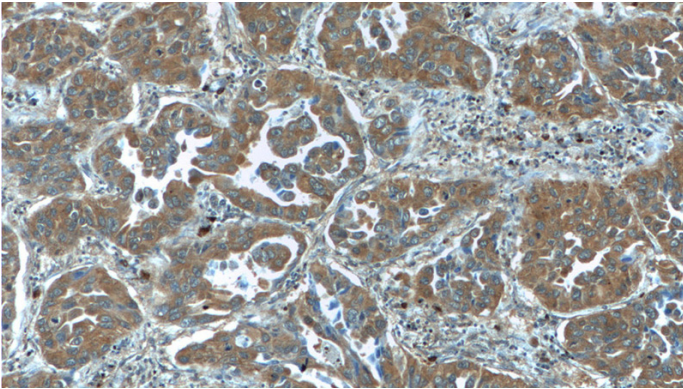
## Dilutions

Recommended Dilution:

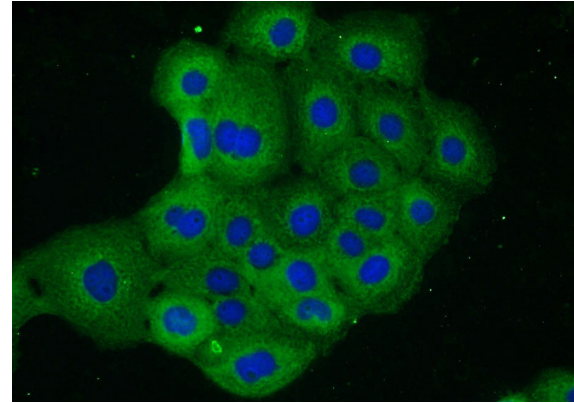
# RRAS2 antibody

Catalog Number: 114921

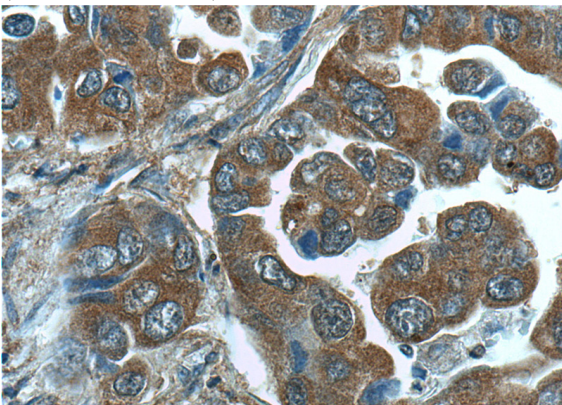
---



Immunohistochemistry of paraffin-embedded human lung cancer tissue slide using Catalog No:114921(RRAS2 Antibody) at dilution of 1:50 (under 40x lens)



Immunofluorescent analysis of A431 cells using Catalog No:114921(RRAS2 Antibody) at dilution of 1:25 and Alexa Fluor 488-conjugated AffiniPure Goat Anti-Rabbit IgG(H+L)



Immunohistochemistry of paraffin-embedded human lung cancer tissue slide using Catalog No:114921(RRAS2 Antibody) at dilution of 1:50 (under 10x lens)