

CUL2 Polyclonal Antibody



Catalog Number: 163921

Product name

CUL2 Polyclonal Antibody

WB 1:500 - 1:2000

IHC 1:50 - 1:200

IF 1:50 - 1:200

Specificity

Human, Mouse

Antibody description

Polyclonal antibody to CUL2

Preparation

Antigen: Recombinant fusion protein containing a sequence corresponding to amino acids 40-310 of human CUL2 (NP_001185708.1).

Formulation

PBS with 0.02% sodium azide, 50% glycerol, pH7.3.

Storage

Store at -20°C. Avoid freeze / thaw cycles.

Clonality

Polyclonal

Ig Type

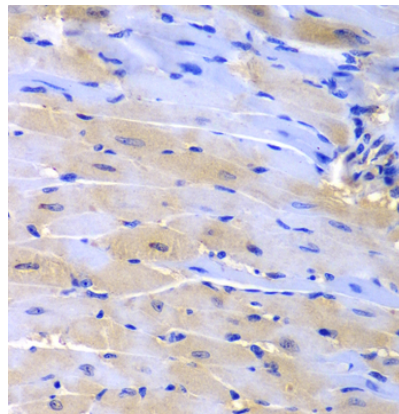
Rabbit IgG

Applications

WB, IHC, IF

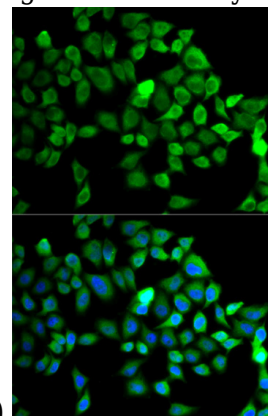
Dilutions

Validations



Immunohistochemistry - CUL2 Polyclonal Antibody

Immunohistochemistry of paraffin-embedded mouse heart using CUL2 antibody at dilution of



1:200 (40x lens).

Immunofluorescence - CUL2 Polyclonal Antibody

Immunofluorescence analysis of MCF-7 cells using CUL2 antibody . Blue: DAPI for nuclear staining.