

# MYDGF antibody



Catalog Number: 112921

## Product name

MYDGF antibody

WB: 1:200-1:1000

IHC: 1:20-1:200

## Specificity

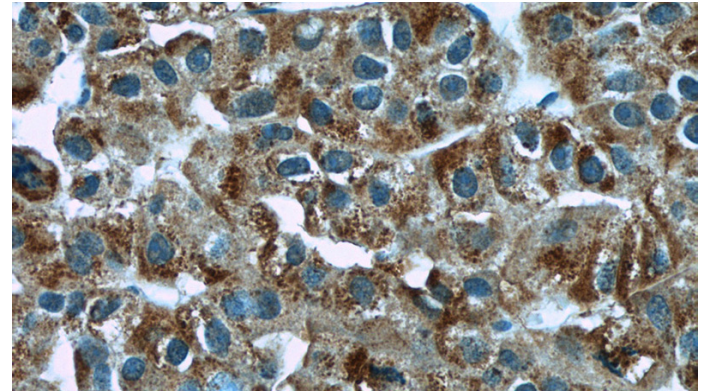
Human, Mouse; other species not tested.

IF: 1:10-1:100

## Validations

## Antibody description

MYDGF Rabbit Polyclonal antibody. Positive WB detected in DU 145 cells, COLO 320 cells, HeLa cells, Jurkat cells, Recombinant protein. Positive IF detected in HepG2 cells. Positive IHC detected in human liver cancer tissue, human colon cancer tissue, human lung cancer tissue. Observed molecular weight by Western-blot: 15-19 kDa



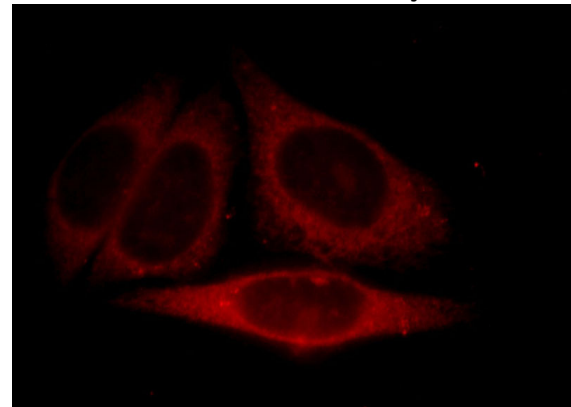
## Preparation

This antibody was obtained by immunization of MYDGF recombinant protein (Accession Number: NM\_019107). Purification method: Antigen affinity purified.

Immunohistochemistry of paraffin-embedded human liver cancer slide using Catalog No:112921(C19orf10 Antibody) at dilution of 1:50

## Formulation

PBS with 0.1% sodium azide and 50% glycerol pH 7.3.



## Storage

Store at -20°C. DO NOT ALIQUOT

## Clonality

Polyclonal

## Ig Type

Rabbit IgG

## Applications

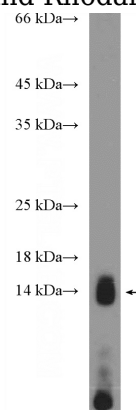
ELISA, IF, IHC, WB

## Dilutions

Recommended Dilution:

IgG (red).

Immunofluorescent analysis of HepG2 cells, using C19orf10 antibody Catalog No:112921 at 1:25 dilution and Rhodamine-labeled goat anti-rabbit



# MYDGF antibody



Catalog Number: 112921

---

DU 145 cells were subjected to SDS PAGE followed by western blot with Catalog

No:112921(C19orf10 Antibody) at dilution of 1:300