

# CPPED1 antibody

Catalog Number: 109521

## Product name

CPPED1 antibody

## Specificity

Human; other species not tested.

## Antibody description

CPPED1 Rabbit Polyclonal antibody. Positive WB detected in SMMC-7721 cells. Positive IHC detected in human liver cancer tissue. Observed molecular weight by Western-blot: 28-35 kDa

## Preparation

This antibody was obtained by immunization of CPPED1 recombinant protein (Accession Number: NM\_018340). Purification method: Antigen affinity purified.

## Formulation

PBS with 0.1% sodium azide and 50% glycerol pH 7.3.

## Storage

Store at -20°C. DO NOT ALIQUOT

## Clonality

Polyclonal

## Ig Type

Rabbit IgG

## Applications

ELISA, IHC, WB

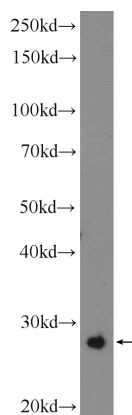
## Dilutions

Recommended Dilution:

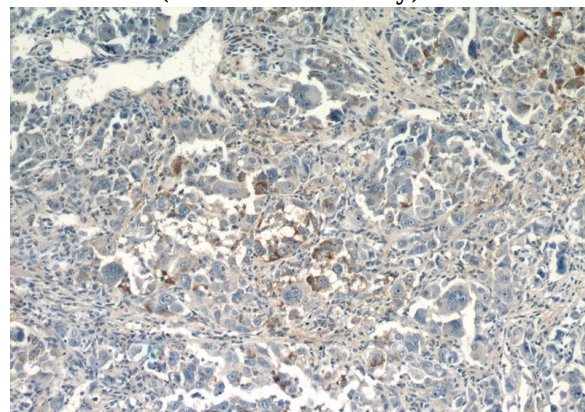
WB: 1:200-1:1000

IHC: 1:20-1:200

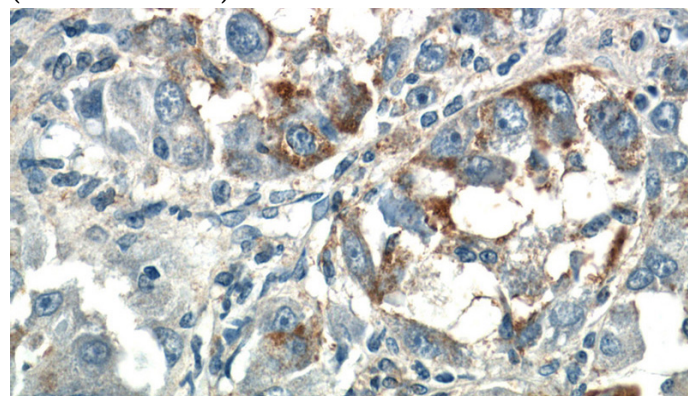
## Validations



SMMC-7721 cells were subjected to SDS PAGE followed by western blot with Catalog No:109521(CPPED1 Antibody) at dilution of 1:300



Immunohistochemistry of paraffin-embedded human liver cancer tissue slide using Catalog No:109521(CPPED1 Antibody) at dilution of 1:50 (under 10x lens)



Immunohistochemistry of paraffin-embedded human liver cancer tissue slide using Catalog No:109521(CPPED1 Antibody) at dilution of 1:50 (under 40x lens)