

# Anti-PPP1A/PPP1CA+PPP1CB Rabbit antibody



Catalog Number: 167521

## Product name

Anti-PPP1A/PPP1CA+PPP1CB Rabbit antibody

## Specificity

Human, Mouse, Rat

## Antibody description

PPP1A/PPP1CA+PPP1CB Rabbit polyclonal antibody

## Preparation

Antigen: A synthesized peptide derived from human PPP1CA + 1CB

## Formulation

Rabbit IgG in phosphate buffered saline , pH 7.4, 150mM NaCl, 0.02% sodium azide and 50% glycerol.

## Storage

Store at 4°C short term. Store at -20°C long term. Avoid freeze / thaw cycle.

## Clonality

Polyclonal

## Ig Type

Rabbit IgG

## Applications

WB, IHC-P, ICC/IF, IP

## Dilutions

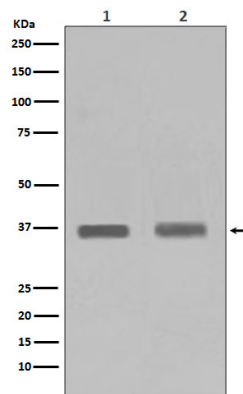
WB: 1/500-1/2000

IHC: 1/50-1/200

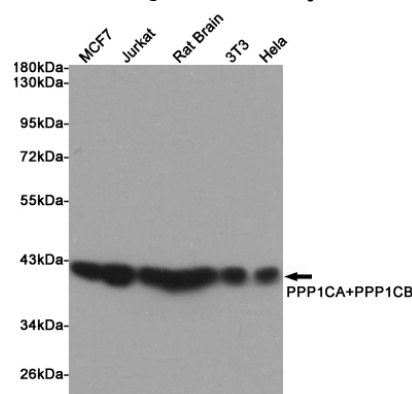
ICC/IF: 1/50-1/200

IP: 1/50

## Validations

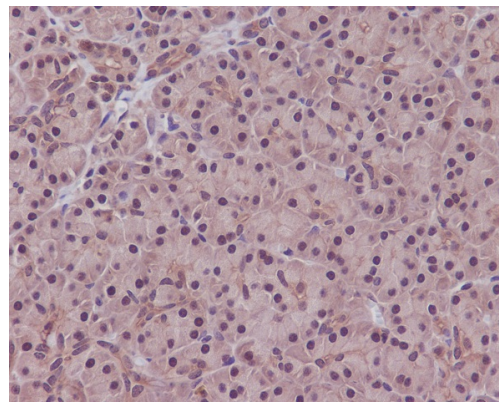


Western blot analysis of PPP1CA + PPP1CB expression in (1) Jurkat cell lysate; (2) HeLa cell



lysate.

Western blot analysis of extracts from MCF7, Jurkat, Rat Brain, 3T3 and HeLa cells using PPP1CA+PPP1CB Rabbit pAb at 1:1000 dilution. Predicted band size: 37kDa. Observed band size:



37kDa.

Immunohistochemical analysis of paraffin-embedded human pancreas, using PPP1CA+PPP1CB Antibody.