

# Phospho-TBC1D4-S588 pAb



Catalog Number: 166521

## Product name

Phospho-TBC1D4-S588 pAb

## Specificity

Human, Mouse, Rat

## Antibody description

Polyclonal antibody to Phospho-TBC1D4-S588

## Preparation

Antigen: A synthetic phosphorylated peptide around S588 of human TBC1D4 (NP\_055647.2).

## Formulation

PBS with 0.02% sodium azide, 50% glycerol, pH7.3.

## Storage

Store at -20°C. Avoid freeze / thaw cycles.

## Clonality

Polyclonal

## Ig Type

Rabbit IgG

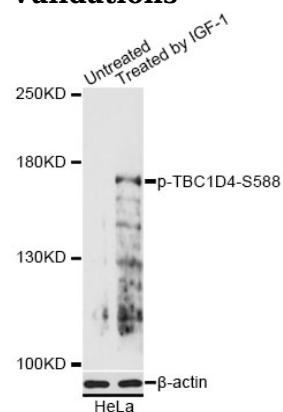
## Applications

WB

## Dilutions

WB 1:500 - 1:2000

## Validations



Western blot - Phospho-TBC1D4-S588 pAb

Western blot analysis of extracts of HeLa cells, using Phospho-TBC1D4-S588 antibody at 1:2000 dilution. HeLa cells were treated by IGF-1 (50ng/ml) for 30 minutes after serum-starvation overnight. Secondary antibody: HRP Goat Anti-Rabbit IgG (H+L) at 1:10000 dilution. Lysates/proteins: 25ug per lane. Blocking buffer: 3% BSA. Detection: ECL Basic Kit. Exposure time: 30s.