

# SP1 antibody

Catalog Number: 115521

## Product name

SP1 antibody

WB: 1:500-1:5000

IP: 1:200-1:2000

## Specificity

Human, Mouse, Rat; other species not tested.

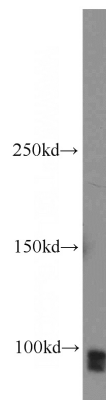
IHC: 1:20-1:200

IF: 1:20-1:200

## Antibody description

SP1 Rabbit Polyclonal antibody. Positive IP detected in A431 cells. Positive WB detected in Jurkat cells, A431 cells, HEK-293 cells, K-562 cells. Positive IF detected in HeLa cells. Positive IHC detected in human colon tissue, human stomach cancer tissue. Observed molecular weight by Western-blot: 95-106 kDa

## Validations



## Preparation

This antibody was obtained by immunization of SP1 recombinant protein (Accession Number: NM\_138473). Purification method: Antigen affinity purified.

Jurkat cells were subjected to SDS PAGE followed by western blot with Catalog No:115521(SP1 antibody) at dilution of 1:500

## Formulation

PBS with 0.02% sodium azide and 50% glycerol pH 7.3.

## Storage

Store at -20°C. DO NOT ALIQUOT

## Clonality

Polyclonal

## Ig Type

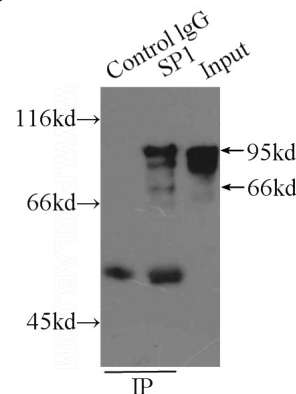
Rabbit IgG

## Applications

ELISA, WB, IP, IHC, IF

## Dilutions

Recommended Dilution:

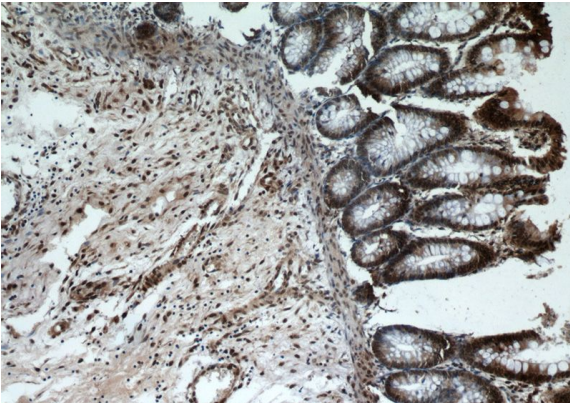


IP Result of anti-SP1 (IP:Catalog No:115521, 6ug; Detection:Catalog No:115521 1:500) with A431 cells lysate 2500ug.

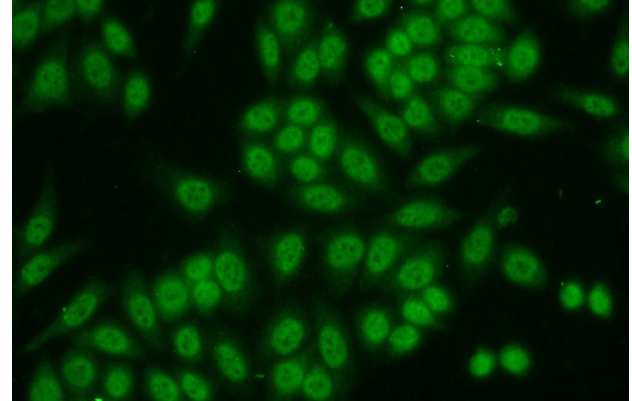
# SP1 antibody

Catalog Number: 115521

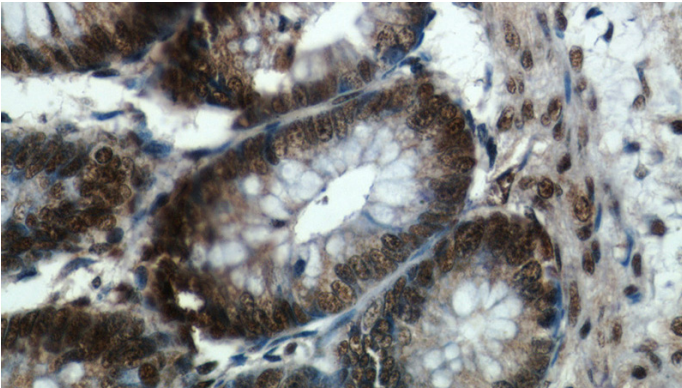
---



Immunohistochemical of paraffin-embedded human colon using Catalog No:115521(SP1 antibody) at dilution of 1:50 (under 40x lens)



Immunohistochemical of paraffin-embedded human colon using Catalog No:115521(SP1 antibody) at dilution of 1:50 (under 10x lens)



Immunofluorescent analysis of HeLa cells using Catalog No:115521(SP1 Antibody) at dilution of 1:50 and Alexa Fluor 488-conjugated AffiniPure Goat Anti-Rabbit IgG(H+L)