

ZFYVE16 Polyclonal Antibody



Catalog Number: 165521

Product name

ZFYVE16 Polyclonal Antibody

Specificity

Human, Mouse

Antibody description

Polyclonal antibody to ZFYVE16

Preparation

Antigen: Recombinant fusion protein containing a sequence corresponding to amino acids 1-280 of human ZFYVE16 (NP_055548.3).

Formulation

PBS with 0.02% sodium azide, 50% glycerol, pH7.3.

Storage

Store at -20°C. Avoid freeze / thaw cycles.

Clonality

Polyclonal

Ig Type

Rabbit IgG

Applications

WB, IHC, IF

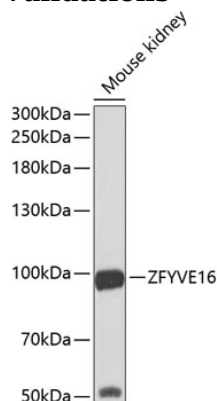
Dilutions

WB 1:500 - 1:2000

IHC 1:50 - 1:200

IF 1:50 - 1:200

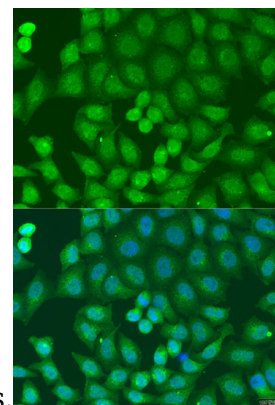
Validations



Western blot - ZFYVE16 Polyclonal Antibody

Western blot analysis of extracts of mouse kidney, using ZFYVE16 antibody at 1:1000 dilution. Secondary antibody: HRP Goat Anti-Rabbit IgG (H+L) at 1:10000 dilution. Lysates/proteins: 25ug per lane. Blocking buffer: 3% nonfat dry milk in TBST. Detection: ECL

Basic Kit .Exposure time: 90s.



Immunofluorescence - ZFYVE16 Polyclonal Antibody

Immunofluorescence analysis of U2OS cells using ZFYVE16 antibody at dilution of 1:100. Blue: DAPI for nuclear staining.