

Radixin antibody



Catalog Number: 114521

Product name

Radixin antibody

Immunogen

[Human RDX Recombinant protein \(GST tag\)](#)

Specificity

Human, Mouse, Rat; other species not tested.

Antibody description

Radixin Rabbit Polyclonal antibody. Positive FC detected in MCF-7 cells. Positive IHC detected in human pancreas cancer tissue, human liver cancer tissue, human pancreas tissue. Positive IF detected in MCF-7 cells. Positive WB detected in mouse pancreas tissue, HEK-293 cells, Y79 cells. Observed molecular weight by Western-blot: 75kd

Preparation

This antibody was obtained by immunization of Radixin recombinant protein (Accession Number: XM_047427390). Purification method: Antigen affinity purified.

Formulation

PBS with 0.02% sodium azide and 50% glycerol pH 7.3.

Storage

Store at -20°C. DO NOT ALIQUOT

Clonality

Polyclonal

Ig Type

Rabbit IgG

Applications

ELISA, WB, IHC, FC, IF

Dilutions

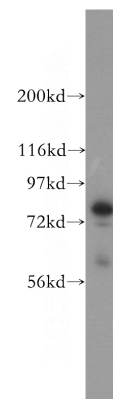
Recommended Dilution:

WB: 1:500-1:5000

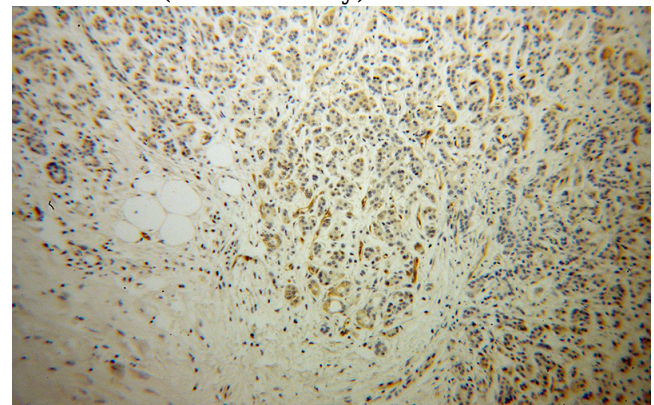
IHC: 1:20-1:200

IF: 1:20-1:200

Validations



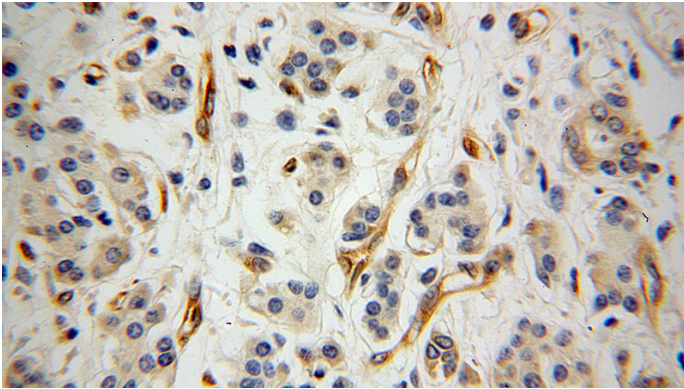
mouse pancreas tissue were subjected to SDS PAGE followed by western blot with Catalog No:114521(RDX antibody) at dilution of 1:1000



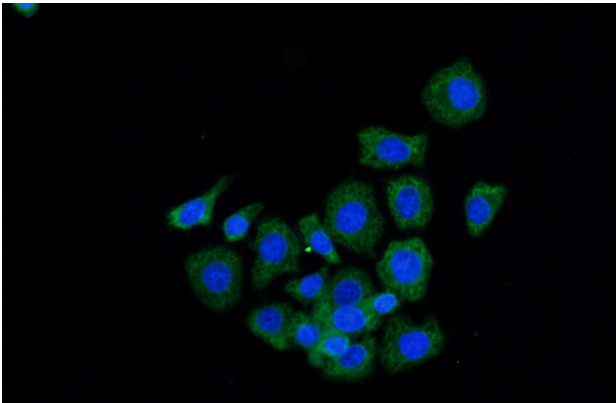
Immunohistochemical of paraffin-embedded human pancreas cancer using Catalog No:114521(RDX antibody) at dilution of 1:100 (under 10x lens)

Radixin antibody

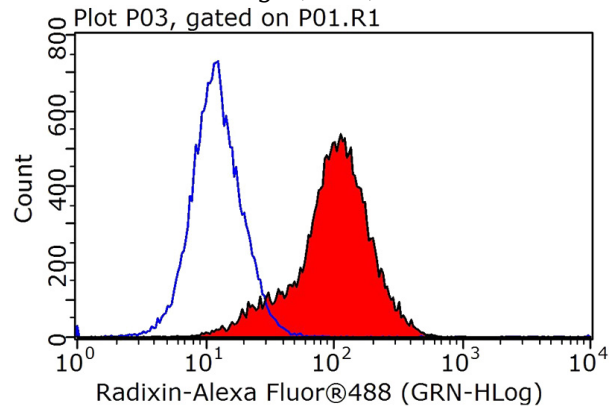
Catalog Number: 114521



Immunohistochemical of paraffin-embedded human pancreas cancer using Catalog No:114521(RDX antibody) at dilution of 1:100 (under 40x lens)



Immunofluorescent analysis of MCF-7 cells using Catalog No:114521(RDX Antibody) at dilution of 1:50 and Alexa Fluor 488-conjugated AffiniPure Goat Anti-Rabbit IgG(H+L)



1X10⁶ MCF-7 cells were stained with 0.2ug RDX antibody (Catalog No:114521, red) and control antibody (blue). Fixed with 90% MeOH blocked with 3% BSA (30 min). Alexa Fluor 488-conjugated AffiniPure Goat Anti-Rabbit IgG(H+L) with dilution 1:1000.