

# Human IGSF8 (His Tag) recombinant protein



Catalog Number: 502521

## General Information

### Gene Name Synonym

CD81 partner 3; Glu-Trp-Ile EWI motif-containing protein 2; Keratinocytes-associated transmembrane protein 4; LIR-D1; Prostaglandin regulatory-like protein

### Protein Construction

A DNA sequence encoding the human IGSF8 (Q969P0-1) (Met1-Thr579) was expressed with a polyhistidine tag at the C-terminus.

### Organism

Human

### Expression Host

Human Cells

## QC Testing

### Purity

> 95 % as determined by SDS-PAGE

### Endotoxin

< 1.0 EU per  $\mu\text{g}$  of the protein as determined by the LAL method

### Stability

Samples are stable for up to twelve months from date of receipt at  $-70^{\circ}\text{C}$

### Predicted N terminal

Arg 28

## Molecular Mass

The recombinant human IGSF8 consists of 563 amino acids and predicts a molecular mass of 60 KDa. It migrates as an approximately 63 KDa band in SDS-PAGE under reducing conditions.

### Formulation

Lyophilized from sterile PBS, pH 7.4.

1. 5 % trehalose and mannitol are added as protectants before lyophilization.

2. Please contact us for any concerns or special requirements.

## Usage Guide

### Storage

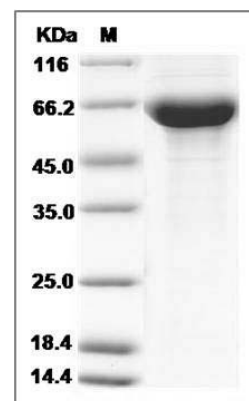
Store it under sterile conditions at  $-20^{\circ}\text{C}$  to  $-80^{\circ}\text{C}$ .

It is recommended that the protein be aliquoted for optimal storage. Avoid repeated freeze-thaw cycles.

### Reconstitution

Adding sterile water, prepare a stock solution of 0.25 mg/ml. Concentration is measured by UV-Vis.

### SDS-PAGE



Human PGRL / IGSF8 Protein (His Tag) SDS-PAGE