

# Anti-Phospho-EGF Receptor (Tyr1172) Rabbit antibody



Catalog Number: 167121

## Product name

Anti-Phospho-EGF Receptor (Tyr1172) Rabbit antibody

## Specificity

Human, Mouse, Rat

## Antibody description

Phospho-EGF Receptor (Tyr1172) Rabbit polyclonal antibody

## Preparation

Antigen: Peptide sequence around phosphorylation site of tyrosine 1172 (P-D-Y(p)-Q-Q) derived from Human EGFR.

## Formulation

Supplied at 1.0mg/mL in phosphate buffered saline (without Mg<sup>2+</sup> and Ca<sup>2+</sup>), pH 7.4, 150mM NaCl, 0.02% sodium azide and 50% glycerol.

## Storage

Store at 4°C short term. Store at -20°C long term. Avoid freeze / thaw cycle.

## Clonality

Polyclonal

## Ig Type

Rabbit IgG

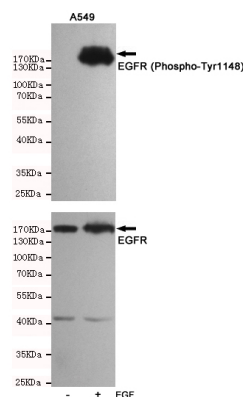
## Applications

WB, IHC-P

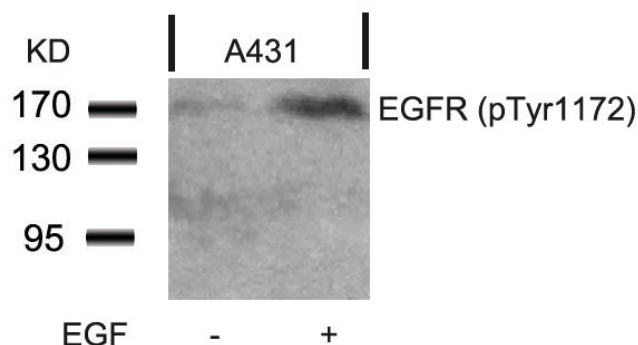
## Dilutions

WB:1/500-1/1000IHC:1/50-1/100

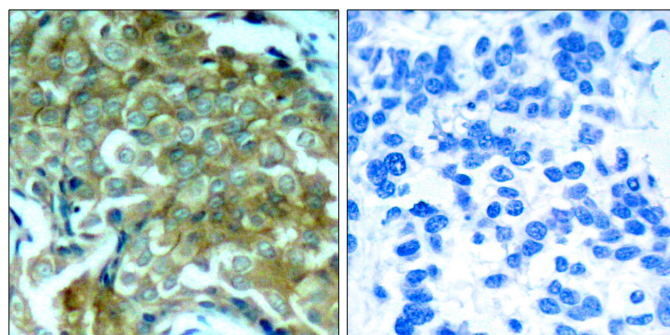
## Validations



Western blot analysis of extracts from A549 cells, untreated or treated with EGF(10ng/ml,10min), using EGFR (Phospho-Tyr1148) Rabbit pAb (167121,1:500 diluted,upper) and EGFR Receptor Mouse mAb (201012-3F12,lower).



Western blot analysis of extracts from A431 cells untreated or treated with EGF using EGFR (Phospho-Tyr1172) Antibody .



Immunohistochemical analysis of paraffin-embedded human breast carcinoma tissue using EGFR (Phospho-Tyr1172) Antibody (left) or the same antibody preincubated with blocking peptide (right).