

# Anti-Tbx21 antibody



Catalog Number: 175121

## Product name

Anti-Tbx21 antibody

WB: 1:500

FC: 1:50-1:100

## Specificity

Human, Mouse

## Antibody description

Rabbit polyclonal antibody to Tbx21

## Preparation

This antigen of this antibody was synthetic peptide within human t-bet aa 480-530.

## Formulation

Liquid, 1\*PBS (pH7.4), 0.2% BSA, 50% Glycerol. Preservative: 0.05% Sodium Azide.

## Storage

Store at +4°C after thawing. Aliquot store at -20°C. Avoid repeated freeze / thaw cycles.

## Clonality

Polyclonal

## Ig Type

Rabbit IgG

## Applications

WB, FC

## Dilutions

## Validations

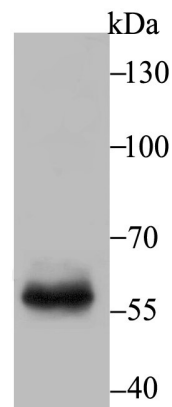


Fig1: Western blot analysis of T-bet on mouse marrow tissue lysate using anti-T-bet antibody at 1/500 dilution.

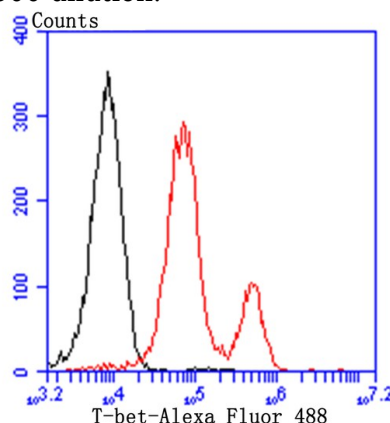


Fig2: Flow cytometric analysis of Jurkat cells with T-bet antibody at 1/100 dilution (red) compared with an unlabelled control (cells without incubation with primary antibody; black). Alexa Fluor 488-conjugated goat anti-rabbit IgG was used as the secondary antibody.