

# Human KLK7/PRSS6/SCCE (His tag) recombinant protein



Catalog Number: 519821

## General Information

### Gene Name Synonym

Kallikrein-7, hK7, Serine Protease 6, Stratum Corneum Chymotryptic Enzyme, hSCCE, KLK7, PRSS6, SCCE

### Protein Construction

A DNA sequence encoding the Human KLK7/PRSS6/SCCE Glu23-His252 is expressed with a 6His tag at the C-terminus.

### Organism

Human

### Expression Host

Human Cells

## QC Testing

### Purity

>95% as determined by SDS-PAGE.

### Endotoxin

<1.0 EU per µg protein as determined by the LAL

method.

### Stability

Store for up to 6 months at -20°C

### Formulation

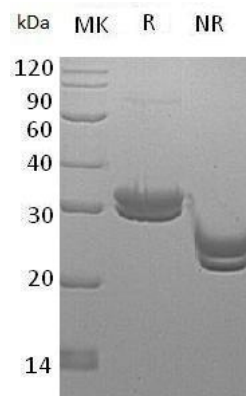
Supplied as a 0.2 µm filtered solution of 20mM HEPES, 150mM NaCl, pH 7.5.

## Usage Guide

### Storage

Store at <-20°C, minimize freeze-thaw cycles.

### SDS-PAGE



Human KLK7/PRSS6/SCCE (His tag) recombinant protein