

WFDC1 antibody



Catalog Number: 116821

Product name

WFDC1 antibody

Recommended Dilution:

WB: 1:200-1:2000

Immunogen

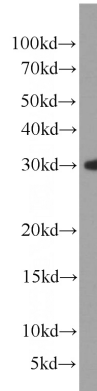
IHC: 1:20-1:200

[Human WFDC1 Recombinant protein \(GST tag\)](#)

Validations

Specificity

Human; other species not tested.



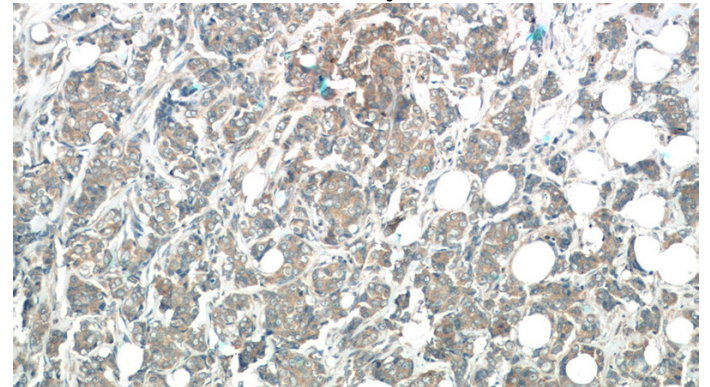
Antibody description

WFDC1 Rabbit Polyclonal antibody. Positive WB detected in HEK-293 cells, PC-3 cells. Positive IHC detected in human breast cancer tissue, human small intestine tissue. Observed molecular weight by Western-blot: 29 kDa

HEK-293 cells were subjected to SDS PAGE followed by western blot with Catalog No:116821(WFDC1 antibody) at dilution of 1:1000

Preparation

This antibody was obtained by immunization of WFDC1 recombinant protein (Accession Number: NM_001282466). Purification method: Antigen affinity purified.



Formulation

PBS with 0.02% sodium azide and 50% glycerol pH 7.3.

Storage

Store at -20°C. DO NOT ALIQUOT

Immunohistochemistry of paraffin-embedded human breast cancer tissue slide using Catalog No:116821(WFDC1 Antibody) at dilution of 1:50 (under 10x lens)

Clonality

Polyclonal

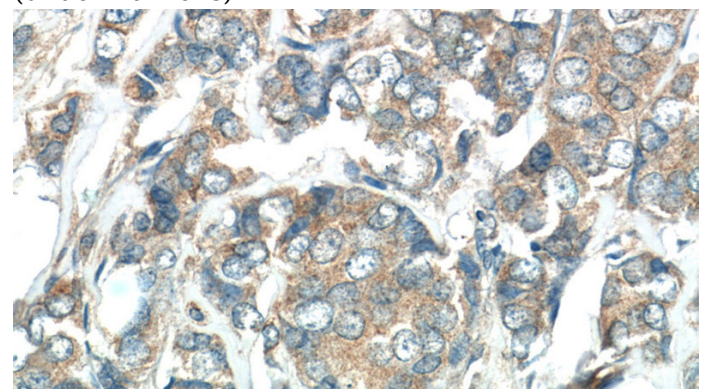
Ig Type

Rabbit IgG

Applications

ELISA, WB, IHC

Dilutions



WFDC1 antibody



Catalog Number: 116821

Immunohistochemistry of paraffin-embedded human breast cancer tissue slide using Catalog

No:116821(WFDC1 Antibody) at dilution of 1:50 (under 40x lens)