

# Human CTLA-4/CD152 (His Tag) recombinant protein



Catalog Number: 503821

## General Information

### Gene Name Synonym

Cytotoxic T-lymphocyte-associated antigen 4

### Protein Construction

A DNA sequence encoding the human CTLA4 (NP\_005205.2) extracellular domain (Met 1-Phe 162) was fused with the a polyhistidine tag at the C-terminus.

### Organism

Human

### Expression Host

Human Cells

## QC Testing

### Activity

1. Measured by its binding ability in a functional ELISA.
2. Immobilized human CTLA4 (cat: 503821) at 10 µg/mL (100 µl/well) can bind human B7-1/Fc (cat: 503507), The EC<sub>50</sub> of human B7-1/Fc (cat: 503507) is 14 ng/mL.
3. Immobilized human CTLA4 (cat: 503821) at 10 µg/mL (100 µl/well) can bind human B7-2/Fch (cat: 504521), The EC<sub>50</sub> of human B7-2/Fch (cat: 504521) is 53 ng/mL.

### Purity

> 90 % as determined by SDS-PAGE

### Endotoxin

< 1.0 EU per µg of the protein as determined by the LAL method

### Stability

Samples are stable for up to twelve months from

date of receipt at -70°C

### Predicted N terminal

Ala 37

### Molecular Mass

The recombinant human CTLA4 consists of 137 amino acids and has a predicted molecular mass of 15 kDa.

### Formulation

Lyophilized from sterile PBS, pH 7.4

1. 5 % trehalose and mannitol are added as protectants before lyophilization.

2. Please contact us for any concerns or special requirements.

## Usage Guide

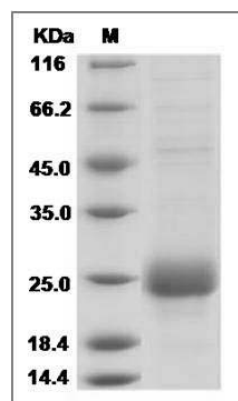
### Storage

Store it under sterile conditions at -20°C to -80°C. It is recommended that the protein be aliquoted for optimal storage. Avoid repeated freeze-thaw cycles.

### Reconstitution

Adding sterile water, prepare a stock solution of 0.25 mg/ml. Concentration is measured by UV-Vis.

### SDS-PAGE



Human CTLA4 / CD152 Protein (His Tag) SDS-PAGE