

Anti-CCN3 / NOV (IGFBP9) antibody



Catalog Number: 103821

Product name

Anti-CCN3 / NOV (IGFBP9) antibody

Immunogen

[Human CCN3 / NOV \(IGFBP9\) \(His Tag\) recombinant protein](#)

Specificity

Human CCN3 / NOV / IGFBP9

Antibody description

Rabbit polyclonal to CCN3 / NOV (IGFBP9)

Preparation

Produced in rabbits immunized with purified, recombinant Human CCN3 / NOV / IGFBP9 (rh CCN3 / NOV / IGFBP9; NP_002505.1; Met 1-Met 357). CCN3 / NOV / IGFBP9 specific IgG was purified by Human CCN3 / NOV / IGFBP9 affinity chromatography.

Formulation

0.2 µm filtered solution in PBS with 5% trehalose

Storage

This antibody can be stored at 2°C-8°C for one month without detectable loss of activity. Antibody products are stable for twelve months from date of receipt when stored at -20°C to -80°C.

Preservative-Free.

Sodium azide is recommended to avoid contamination (final concentration 0.05%-0.1%). It is toxic to cells and should be disposed of properly. Avoid repeated freeze-thaw cycles.

Clonality

Polyclonal

Ig Type

Rabbit IgG

Applications

ELISA, WB, IHC-P

Dilutions

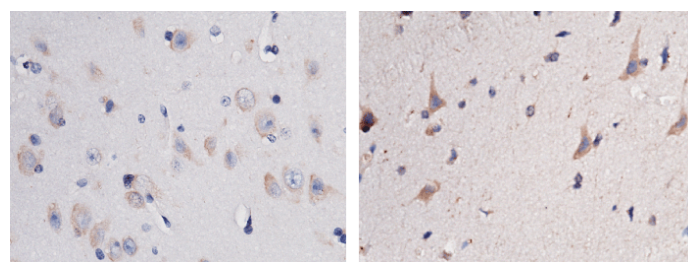
WB: 10-20 µg/mL

ELISA: 0.1-0.2 µg/mL

This antibody can be used at 0.1-0.2 µg/mL with the appropriate secondary reagents to detect Human NOV. The detection limit for Human NOV is approximately 0.00245 ng/well.

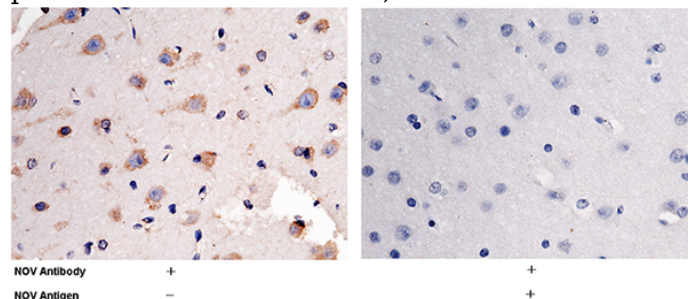
IHC-P: 2-5 µg/mL

Validations



CCN3 / NOV / IGFBP9 Antibody, Rabbit PAb, Antigen Affinity Purified, Immunohistochemistry

Immunochemical staining of human NOV in human brain (from 2 donors) with rabbit polyclonal antibody (2 µg/mL, formalin-fixed paraffin embedded sections).



CCN3 / NOV / IGFBP9 Antibody, Rabbit PAb, Antigen Affinity Purified, Immunohistochemistry

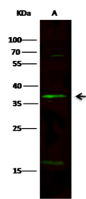
Immunochemical staining of human NOV in human brain with rabbit polyclonal antibody (2 µg/mL, formalin-fixed paraffin embedded

Anti-CCN3 / NOV (IGFBP9) antibody



Catalog Number: 103821

sections). The left panel: tissue incubated with primary antibody; The right panel: tissue incubated with the mixture of primary antibody and antigen (recombinant protein).



Lanes	
Items	A
Sample (whole cell lysate)	RS62
Sample Volume (μg/lane)	30
Gel	13% SDS-PAGE reducing gel
Recommended Concentration	10-20 μg/ml
Secondary Antibody	Dylight 800 labeled Antibody To Rabbit IgG (H+L), at 1:5000 dilution.

CCN3 / NOV / IGFBP9 Antibody, Rabbit PAb, Antigen Affinity Purified, Western blot