

# MRPL28 antibody



Catalog Number: 112821

## Product name

MRPL28 antibody

## Specificity

Human, Mouse, Rat; other species not tested.

## Antibody description

MRPL28 Rabbit Polyclonal antibody. Positive IP detected in mouse brain tissue. Positive WB detected in A375 cells, HeLa cells, human kidney tissue, human testis tissue, mouse brain tissue, mouse liver tissue, mouse spleen tissue, mouse thymus tissue. Positive IHC detected in human kidney tissue, human testis tissue. Positive IF detected in HepG2 cells, Hela cells. Observed molecular weight by Western-blot: 30 kDa

## Preparation

This antibody was obtained by immunization of MRPL28 recombinant protein (Accession Number: XM\_005255041). Purification method: Antigen affinity purified.

## Formulation

PBS with 0.02% sodium azide and 50% glycerol pH 7.3.

## Storage

Store at -20°C. DO NOT ALIQUOT

## Clonality

Polyclonal

## Ig Type

Rabbit IgG

## Applications

ELISA, WB, IHC, IF, IP

## Dilutions

Recommended Dilution:

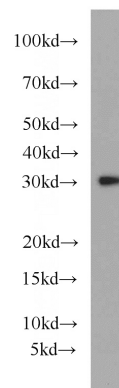
WB: 1:500-1:5000

IP: 1:200-1:2000

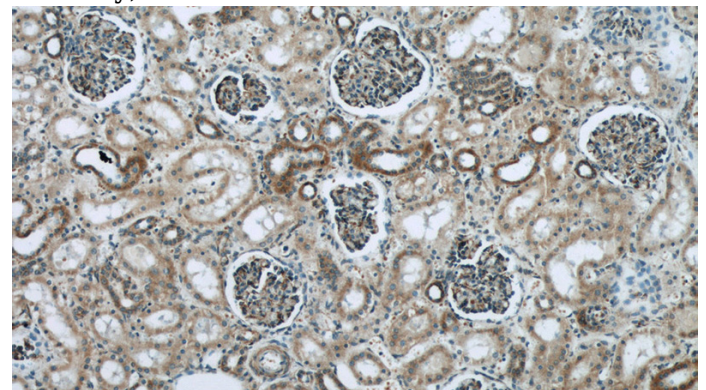
IHC: 1:20-1:200

IF: 1:10-1:100

## Validations



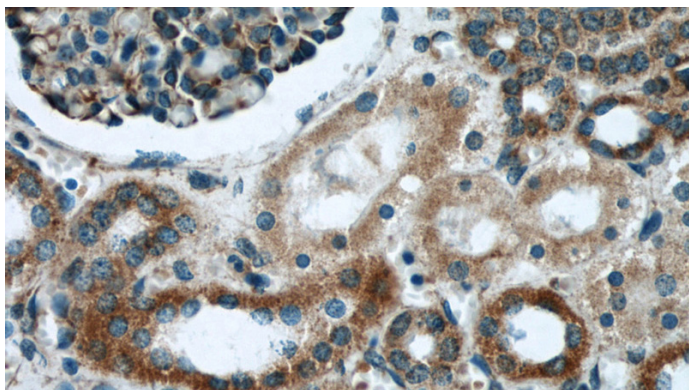
A375 cells were subjected to SDS PAGE followed by western blot with Catalog No:112821(MRPL28 antibody) at dilution of 1:500



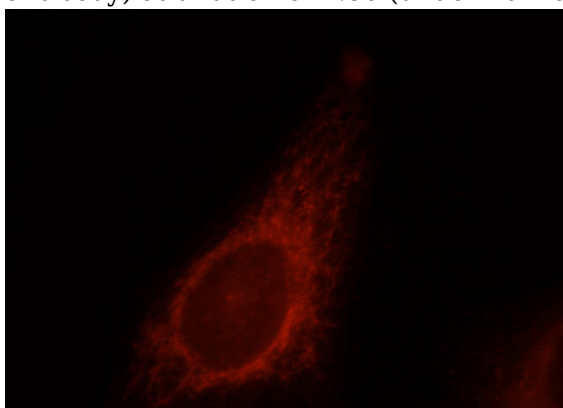
Immunohistochemical of paraffin-embedded human kidney using Catalog No:112821(MRPL28 antibody) at dilution of 1:50 (under 10x lens)

# MRPL28 antibody

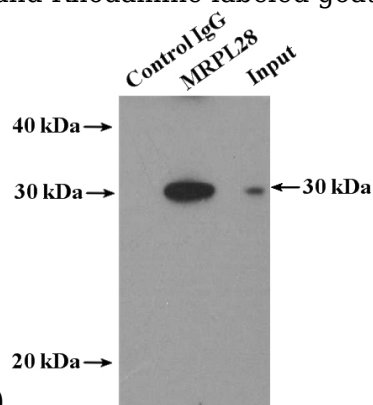
Catalog Number: 112821



Immunohistochemical of paraffin-embedded human kidney using Catalog No:112821(MRPL28 antibody) at dilution of 1:50 (under 40x lens)



Immunofluorescent analysis of HepG2 cells, using MRPL28 antibody Catalog No:112821 at 1:25 dilution and Rhodamine-labeled goat anti-rabbit



IgG (red).

IP Result of anti-MRPL28 (IP:Catalog No:112821, 4ug; Detection:Catalog No:112821 1:500) with mouse brain tissue lysate 4000ug.