

# Mouse Cathepsin D/CTSD (His Tag) recombinant protein



Catalog Number: 500821

## General Information

### Protein Construction

A DNA sequence encoding the mouse CTSD (NP\_034113.1) precursor (Met 1-Leu 410) was expressed with a polyhistidine tag at the C-terminus.

### Organism

Mouse

### Expression Host

Human Cells

## QC Testing

### Purity

> 96 % as determined by SDS-PAGE

### Endotoxin

< 1.0 EU per  $\mu\text{g}$  of the protein as determined by the LAL method

### Stability

Samples are stable for up to twelve months from date of receipt at  $-70^{\circ}\text{C}$

### Predicted N terminal

Ile 21

### Molecular Mass

The secreted recombinant mouse CTSD pro form consists of 401 amino acids and has a predicted molecular mass of 44.4 kDa. In SDS-PAGE under

reducing conditions, the apparent molecular mass of rmCTSD is approximately 48 kDa due to glycosylation.

### Formulation

Lyophilized from sterile PBS, pH 7.4

1. 5 % trehalose and mannitol are added as protectants before lyophilization.

2. Please contact us for any concerns or special requirements.

## Usage Guide

### Storage

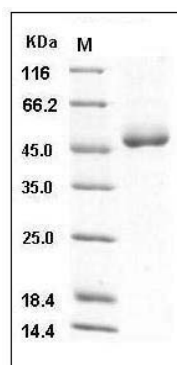
Store it under sterile conditions at  $-20^{\circ}\text{C}$  to  $-80^{\circ}\text{C}$ .

It is recommended that the protein be aliquoted for optimal storage. Avoid repeated freeze-thaw cycles.

### Reconstitution

Adding sterile water, prepare a stock solution of 0.25 mg/ml. Concentration is measured by UV-Vis.

### SDS-PAGE



Mouse Cathepsin D / CTSD Protein (His Tag) SDS-PAGE