

## General Information

### Gene Name Synonym

Protein ST2

### Protein Construction

The secreted isoform of human IL1RL1 (NP\_003847.2) (Met 1-Phe 328) with five amino acids (DDDDK) at the C-terminus was expressed and purified.

### Organism

Human

### Expression Host

Human Cells

## QC Testing

### Purity

> 95 % as determined by SDS-PAGE

### Endotoxin

< 1.0 EU per  $\mu\text{g}$  of the protein as determined by the LAL method

### Stability

Samples are stable for up to twelve months from date of receipt at  $-70^{\circ}\text{C}$

### Predicted N terminal

Lys 19

### Molecular Mass

The recombinant human IL1RL1 consists of 316 amino acids and has a calculated molecular mass of 35.6 kDa. As a result of glycosylation, rh IL1RL1 migrates as an approximately 55-60 kDa band in SDS-PAGE under reducing conditions.

### Formulation

Lyophilized from sterile 50mM Tris, 100mM NaCl, pH 8.0

1. 5 % trehalose and mannitol are added as protectants before lyophilization.
2. Please contact us for any concerns or special requirements.

## Usage Guide

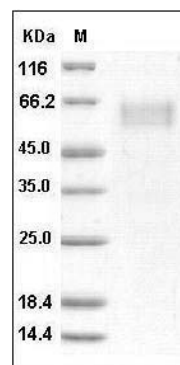
### Storage

Store it under sterile conditions at  $-20^{\circ}\text{C}$  to  $-80^{\circ}\text{C}$ . It is recommended that the protein be aliquoted for optimal storage. Avoid repeated freeze-thaw cycles.

### Reconstitution

Adding sterile water, prepare a stock solution of 0.25 mg/ml. Concentration is measured by UV-Vis.

### SDS-PAGE



Human IL1RL1 / DER4 Protein SDS-PAGE