

Anti-KRT7 / Cytokeratin-7 antibody



Catalog Number: 105021

Product name

Anti-KRT7 / Cytokeratin-7 antibody

Specificity

Human KRT7 / Cytokeratin-7

Antibody description

Rabbit polyclonal to KRT7 / Cytokeratin-7

Preparation

Produced in rabbits immunized with a synthetic peptide corresponding to the center region of the Human KRT7 / Cytokeratin-7, and purified by antigen affinity chromatography.

Formulation

0.2 µm filtered solution in PBS

Storage

This antibody can be stored at 2°C-8°C for one month without detectable loss of activity. Antibody products are stable for twelve months from date of receipt when stored at -20°C to -80°C.

Preservative-Free.

Sodium azide is recommended to avoid contamination (final concentration 0.05%-0.1%). It is toxic to cells and should be disposed of

properly. Avoid repeated freeze-thaw cycles.

Clonality

Polyclonal

Ig Type

Rabbit IgG

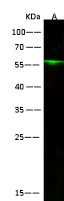
Applications

WB

Dilutions

WB: 10-50 µg/ml

Validations



Items	Lanes
Sample (whole cell lysate)	A431
Sample Volume (µg/lane)	30
Gel	13% SDS-PAGE reducing gel
Recommended Concentration	10-50 µg/ml
Secondary Antibody	Dylight 800-labeled Antibody to Rabbit IgG (H+L), at 1:5000 dilution.
Developed using Odyssey imaging system	
Explanation	Predicted band size : 51 kDa Observed band size : 57 kDa

KRT7 / Cytokeratin-7 Antibody, Rabbit PAb, Antigen Affinity Purified, Western blot