

# Anti-SFTPD / SP-D / SFTP4 antibody



Catalog Number: 100021

## Product name

Anti-SFTPD / SP-D / SFTP4 antibody

## Immunogen

[Rhesus SFTPD / SP-D / SFTP4 \(His Tag\) recombinant protein](#)

## Specificity

Rhesus SFTPD / SP-D / SFTP4

**No cross-reactivity** in ELISA with Human SFTPD

## Antibody description

Rabbit monoclonal to SFTPD / SP-D / SFTP4

## Preparation

This antibody was obtained from a rabbit immunized with purified, recombinant Rhesus SFTPD / SP-D / SFTP4 (NP\_001035283.1; Met1-Phe375).

## Formulation

0.2 µm filtered solution in PBS

## Storage

This antibody can be stored at 2°C-8°C for one month without detectable loss of activity. Antibody products are stable for twelve months from date of receipt when stored at -20°C to -80°C.

Preservative-Free.

Sodium azide is recommended to avoid contamination (final concentration 0.05%-0.1%). It

is toxic to cells and should be disposed of properly. Avoid repeated freeze-thaw cycles.

## Clonality

Monoclonal

## Ig Type

Rabbit IgG

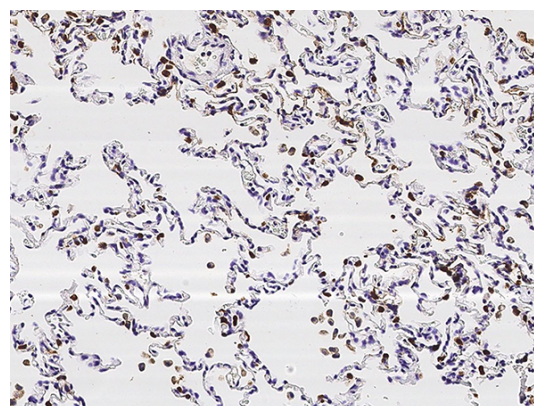
## Applications

IHC-P

## Dilutions

IHC-P: 1-10 µg/mL

## Validations



SFTPD / SP-D / SFTP4 Antibody, Rabbit MAb, Immunohistochemistry

Immunochemical staining of cynomolgus SFTPD in cynomolgus lung with rabbit monoclonal antibody (5 µg/mL, formalin-fixed paraffin embedded sections).