

# Anti-MiTF Rabbit antibody



Catalog Number: 168711

## Product name

Anti-MiTF Rabbit antibody

## Specificity

Human, Mouse, Rat

## Antibody description

MiTF Rabbit monoclonal antibody

## Preparation

Antigen: Recombinant protein of human MiTF

## Formulation

50nM Tris-Glycine(pH 7.4), 0.15M NaCl, 40%Glycerol, 0.01% sodium azide and 0.05% BSA.

## Storage

Store at 4°C short term. Store at -20°C long term. Avoid freeze / thaw cycle.

## Clonality

Monoclonal

## Ig Type

Rabbit IgG

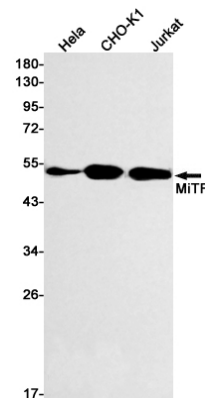
## Applications

WB

## Dilutions

WB: 1/1000-1/2000

## Validations



Western blot detection of MiTF in HeLa, CHO-K1, Jurkat cell lysates using MiTF Rabbit mAb(1:500 diluted). Predicted band size: 59kDa. Observed band size: 52kDa.