

Anti-AMPK alpha 1 Rabbit antibody



Catalog Number: 166711

Product name

Anti-AMPK alpha 1 Rabbit antibody

FC: 1/50

Specificity

Human, Mouse, Rat

Antibody description

AMPK alpha 1 Rabbit polyclonal antibody

Preparation

Antigen: A synthesized peptide derived from human AMPK alpha 1

Formulation

Rabbit IgG in phosphate buffered saline , pH 7.4, 150mM NaCl, 0.02% sodium azide and 50% glycerol.

Storage

Store at 4°C short term. Store at -20°C long term. Avoid freeze / thaw cycle.

Clonality

Polyclonal

Ig Type

Rabbit IgG

Applications

WB, IHC-P, ICC/IF, IP, FC

Dilutions

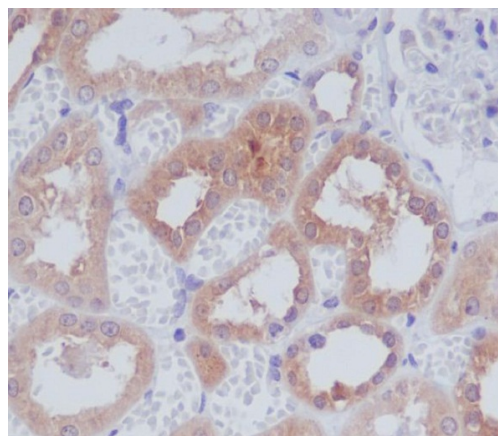
WB: 1/500-1/2000

IHC: 1/50-1/200

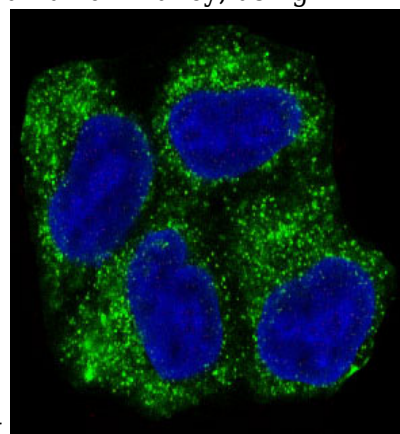
ICC/IF: 1/50-1/200

IP: 1/50

Validations

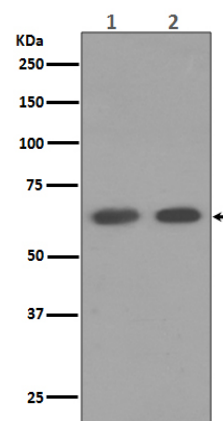


Immunohistochemical analysis of paraffin-embedded human kidney, using AMPK alpha 1



Antibody.

Immunofluorescent analysis of HeLa cells, using



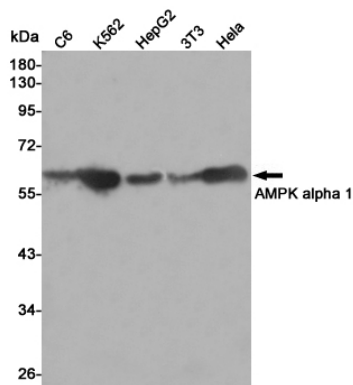
AMPK alpha 1 Antibody .

Western blot analysis of AMPK alpha 1 expression in (1) HeLa cell lysate; (2) HepG2 cell lysate.

Anti-AMPK alpha 1 Rabbit antibody



Catalog Number: 166711



Western blot analysis of AMPK alpha 1 expression in C6, K562, HepG2, 3T3 and HeLa cell lysates using AMPK alpha 1 antibody at 1/1000 dilution. Predicted band size: 63 kDa. Observed band size: 63 kDa.