

# MMS2 antibody



Catalog Number: 112711

## Product name

MMS2 antibody

## Specificity

Human, Mouse, Rat; other species not tested.

## Antibody description

MMS2 Rabbit Polyclonal antibody. Positive WB detected in HEK-293 cells, A375 cells, HeLa cells, HL-60 cells, human brain tissue, Jurkat cells, K-562 cells, rat liver tissue. Positive IHC detected in human colon cancer tissue, human colon tissue. Positive IF detected in HeLa cells, HEK-293 cells. Observed molecular weight by Western-blot: 16-20 kDa

## Preparation

This antibody was obtained by immunization of MMS2 recombinant protein (Accession Number: NM\_003350). Purification method: Antigen affinity purified.

## Formulation

PBS with 0.1% sodium azide and 50% glycerol pH 7.3.

## Storage

Store at -20°C. DO NOT ALIQUOT

## Clonality

Polyclonal

## Ig Type

Rabbit IgG

## Applications

ELISA, WB, IHC, IF

## Dilutions

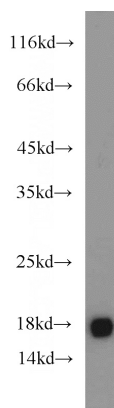
Recommended Dilution:

WB: 1:500-1:5000

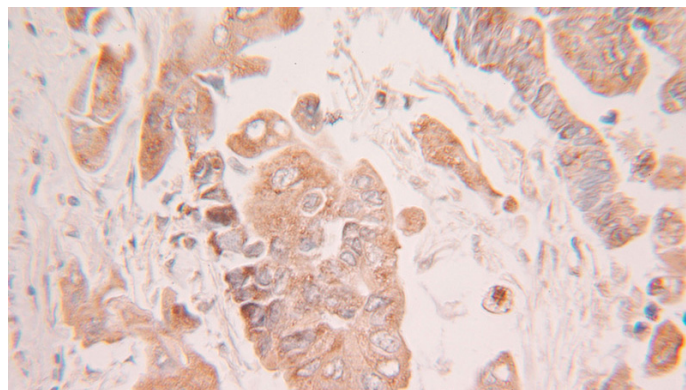
IHC: 1:20-1:200

IF: 1:10-1:100

## Validations



HEK-293 cells were subjected to SDS PAGE followed by western blot with Catalog No:112711(UBE2V2 antibody) at dilution of 1:1500

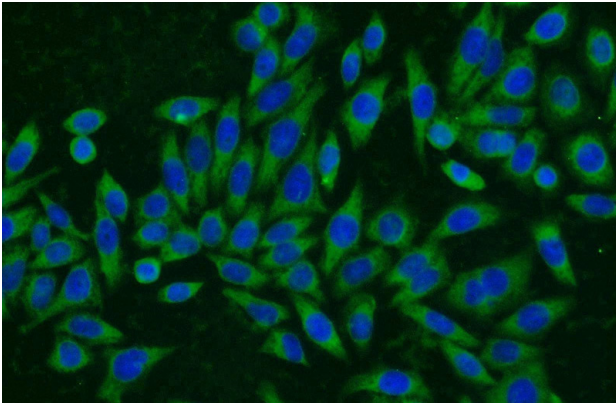


Immunohistochemical of paraffin-embedded human colon cancer using Catalog No:112711(UBE2V2 antibody) at dilution of 1:100 (under 25x lens)

# MMS2 antibody

Catalog Number: 112711

---



Immunofluorescent analysis of HeLa cells using Catalog No:112711(UBE2V2 Antibody) at dilution of 1:25 and Alexa Fluor 594-conjugated AffiniPure Goat Anti-Rabbit IgG(H+L)