

Anti-SFXN4 antibody



Catalog Number: 176311

Product name

Polyclonal

Anti-SFXN4 antibody

Ig Type

Specificity

Rabbit IgG

Human

Applications

Antibody description

WB, IF

Rabbit polyclonal antibody to SFXN4

Dilutions

Preparation

WB: 1:500-1:2000

This antigen of this antibody was the antiserum was produced against synthesized peptide derived from human sfxn4. aa range:1-50

IF: 1:100-1:500

Formulation

Liquid, Liquid in PBS containing 50% glycerol, 0.5% BSA and 0.02% sodium azide.

Validations

Storage

Store at +4°C after thawing. Aliquot store at -20°C or -80°C. Avoid repeated freeze / thaw cycles.

Clonality

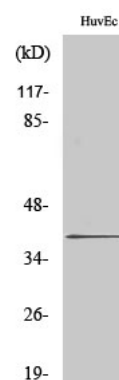


Fig1.; Western Blot analysis of various cells using Sideroflexin-4 Polyclonal Antibody