

SLC20A2 antibody

Catalog Number: 115311

Product name

SLC20A2 antibody

Specificity

Human, Mouse, Rat; other species not tested.

Antibody description

SLC20A2 Rabbit Polyclonal antibody. Positive WB detected in COLO 320 cells. Positive IP detected in COLO 320 cells. Observed molecular weight by Western-blot: 68kd

Preparation

This antibody was obtained by immunization of SLC20A2 recombinant protein (Accession Number: XM_024447235). Purification method: Antigen affinity purified.

Formulation

PBS with 0.1% sodium azide and 50% glycerol pH 7.3.

Storage

Store at -20°C. DO NOT ALIQUOT

Clonality

Polyclonal

Ig Type

Rabbit IgG

Applications

ELISA, WB, IP

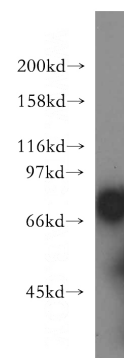
Dilutions

Recommended Dilution:

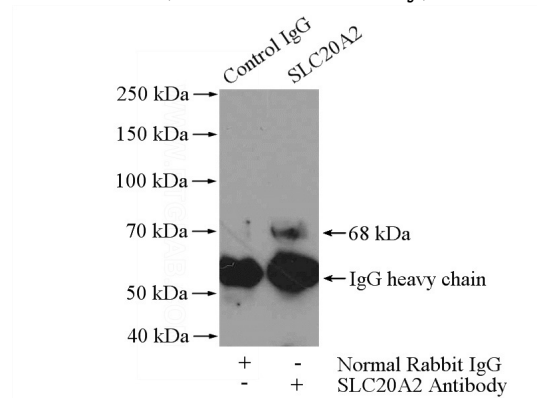
WB: 1:500-1:5000

IP: 1:200-1:1000

Validations



COLO 320 cells were subjected to SDS PAGE followed by western blot with Catalog No:115311(SLC20A2 antibody) at dilution of 1:400



IP Result of anti-SLC20A2 (IP:Catalog No:115311, 4ug; Detection:Catalog No:115311 1:400) with COLO 320 cells lysate 2400ug.