

# Anti-Renin antibody



Catalog Number: 102311

## Product name

Anti-Renin antibody

## Immunogen

[Human Renin \(His Tag\) recombinant protein](#)

## Specificity

Human Renin / REN

**No cross-reactivity** with Human cell lysate (293 cell line) in WB and ELISA.

## Antibody description

Mouse monoclonal to Renin

## Preparation

This antibody was produced from a hybridoma resulting from the fusion of a mouse myeloma with B cells obtained from a mouse immunized with purified, recombinant Human Renin (rh Renin; NP\_000528.1; Met 1-Arg 406). The IgG fraction of the cell culture supernatant was purified by Protein A affinity chromatography.

## Formulation

0.2 µm filtered solution in PBS with 5% trehalose

## Storage

This antibody can be stored at 2°C-8°C for one month without detectable loss of activity. Antibody products are stable for twelve months from date of receipt when stored at -20°C to -80°C.

Preservative-Free.

Sodium azide is recommended to avoid contamination (final concentration 0.05%-0.1%). It

is toxic to cells and should be disposed of properly. Avoid repeated freeze-thaw cycles.

## Clonality

Monoclonal

## Ig Type

Mouse IgG2b

## Applications

ELISA, IHC-P

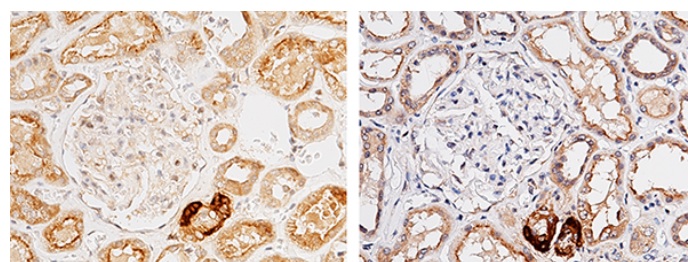
## Dilutions

ELISA: 0.5-1 µg/mL

This antibody can be used at 0.5-1 µg/mL with the appropriate secondary reagents to detect Human RENIN. The detection limit for Human RENIN is 0.078 ng/well.

IHC-P: 10-30 µg/mL

## Validations



Renin / REN Antibody, Mouse MAb, Immunohistochemistry

Immunochemical staining of human RENIN in human kidney (from 2 donors) with mouse monoclonal antibody (15 µg/mL, formalin-fixed paraffin embedded sections).