

HFE antibody

Catalog Number: 111311

Product name

HFE antibody

Specificity

human; other species not tested.

Antibody description

HFE Rabbit Polyclonal antibody. Positive WB detected in A375 cells, human placenta tissue. Observed molecular weight by Western-blot: 45-58kd

Preparation

This antibody was obtained by immunization of HFE recombinant protein (Accession Number: NM_001406751). Purification method: Antigen affinity purified.

Formulation

PBS with 0.02% sodium azide and 50% glycerol pH 7.3.

Storage

Store at -20°C. DO NOT ALIQUOT

Clonality

Polyclonal

Ig Type

Rabbit IgG

Applications

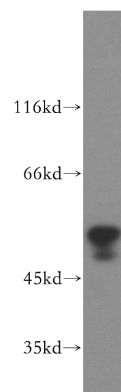
ELISA, WB

Dilutions

Recommended Dilution:

WB: 1:200-1:2000

Validations



A375 cells were subjected to SDS PAGE followed by western blot with Catalog No:111311(HFE antibody) at dilution of 1:300