

EEF1A2 antibody



Catalog Number: 110311

Product name

EEF1A2 antibody

IP: 1:500-1:5000

IHC: 1:20-1:200

Specificity

Human, Mouse, Rat; other species not tested.

Antibody description

EEF1A2 Rabbit Polyclonal antibody. Positive WB detected in MCF7 cells, human brain tissue. Positive IP detected in mouse brain tissue. Positive IHC detected in human ovary tumor tissue. Observed molecular weight by Western-blot: 50-53kd

Preparation

This antibody was obtained by immunization of EEF1A2 recombinant protein (Accession Number: NM_001958). Purification method: Antigen affinity purified.

Formulation

PBS with 0.02% sodium azide and 50% glycerol pH 7.3.

Storage

Store at -20°C. DO NOT ALIQUOT

Clonality

Polyclonal

Ig Type

Rabbit IgG

Applications

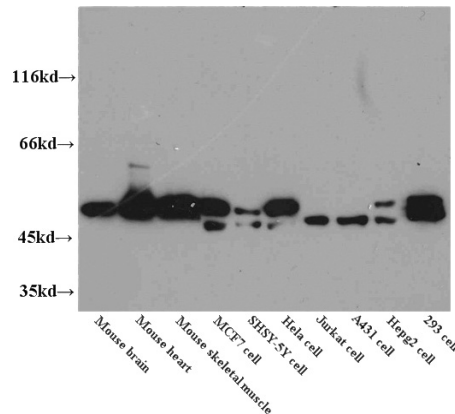
ELISA, WB, IHC, IP

Dilutions

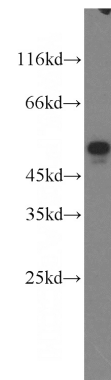
Recommended Dilution:

WB: 1:500-1:5000

Validations

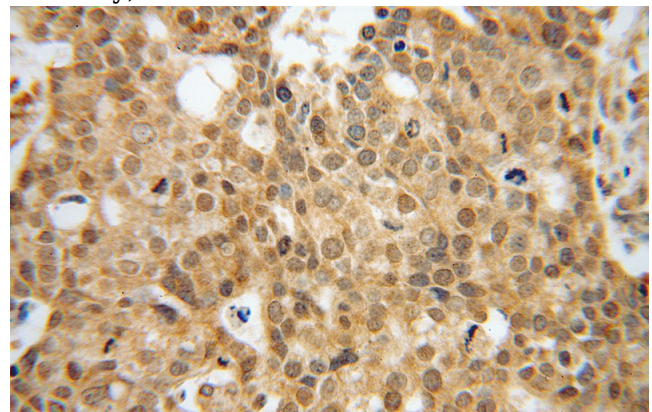


WB results of Catalog No:110311(anti-EEF1A2) in



different cells.

MCF7 cells were subjected to SDS PAGE followed by western blot with Catalog No:110311(EEF1A2 antibody) at dilution of 1:500

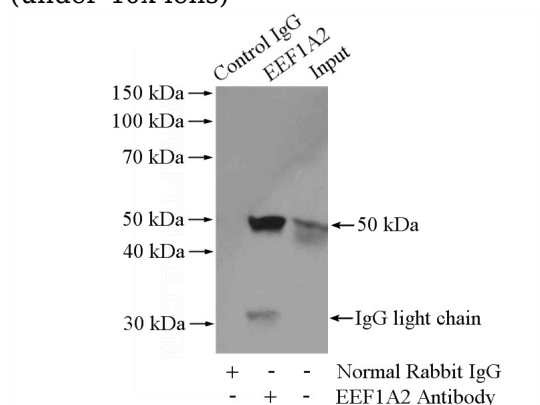


Immunohistochemical of paraffin-embedded human ovary tumor using Catalog No:110311(EEF1A2 antibody) at dilution of 1:100

EEF1A2 antibody

Catalog Number: 110311

(under 40x lens)



IP Result of anti-EEF1A2 (IP:Catalog No:110311, 4ug; Detection:Catalog No:110311 1:1000) with mouse brain tissue lysate 4000ug.