

Anti-IFI30 antibody



Catalog Number: 100311

Product name

Anti-IFI30 antibody

Immunogen

[Human IFI30 \(His Tag\) recombinant protein](#)

Specificity

Human IFI30

Antibody description

Rabbit monoclonal to IFI30

Preparation

This antibody was obtained from a rabbit immunized with purified, recombinant Human IFI30 (rh IFI30; P13284; Met1-Lys243).

Formulation

0.2 µm filtered solution in PBS

Storage

This antibody can be stored at 2°C-8°C for one month without detectable loss of activity. Antibody products are stable for twelve months from date of receipt when stored at -20°C to -80°C.

Preservative-Free.

Sodium azide is recommended to avoid contamination (final concentration 0.05%-0.1%). It is toxic to cells and should be disposed of properly. Avoid repeated freeze-thaw cycles.

Clonality

Monoclonal

Ig Type

Rabbit IgG

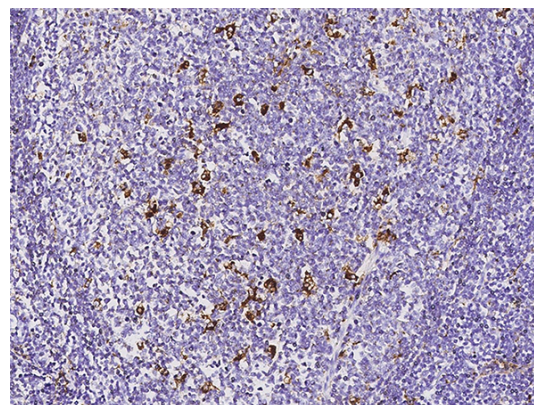
Applications

IHC-P

Dilutions

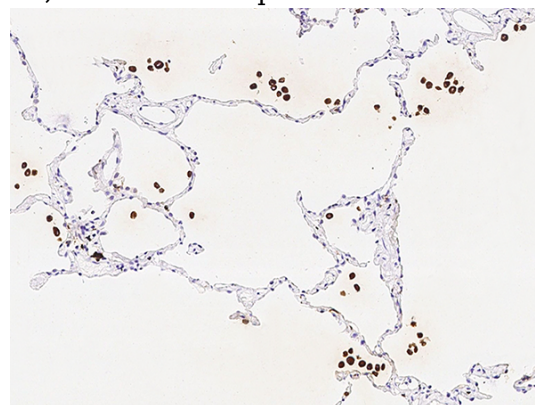
IHC-P: 0.05-2 µg/mL

Validations



IFI30 Antibody, Rabbit MAb,
Immunohistochemistry

Immunochemical staining of human IFI30 in human tonsil with rabbit monoclonal antibody (0.05 µg/mL, formalin-fixed paraffin embedded



sections).

IFI30 Antibody, Rabbit MAb,
Immunohistochemistry

Immunochemical staining of human IFI30 in human lung with rabbit monoclonal antibody (0.05 µg/mL, formalin-fixed paraffin embedded sections).