

Anti-Dextrin Rabbit antibody



Catalog Number: 168611

Product name

Anti-Dextrin Rabbit antibody

Specificity

Human, Mouse, Rat

Antibody description

Dextrin Rabbit monoclonal antibody

Preparation

Antigen: A synthetic peptide of human Dextrin

Formulation

50nM Tris-Glycine(pH 7.4), 0.15M NaCl, 40%Glycerol, 0.01% sodium azide and 0.05% BSA.

Storage

Store at 4°C short term. Store at -20°C long term. Avoid freeze / thaw cycle.

Clonality

Monoclonal

Ig Type

Rabbit IgG

Applications

WB, IHC-P, ICC/IF, FC, IP

Dilutions

WB: 1/1000-1/5000

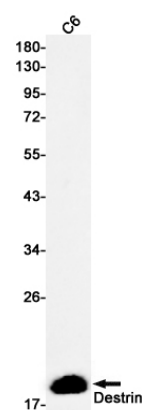
IHC: 1/20-1/50

ICC/IF: 1/50-1/200

FC: 1/50

IP: 1/20

Validations



Western blot detection of Dextrin in C6 cell lysates using Dextrin Rabbit mAb(1:500 diluted).Predicted band size:19kDa.Observed band size:19kDa.