

# Anti-TMEM119 antibody



Catalog Number: 176611

## Product name

Anti-TMEM119 antibody

## Specificity

Human, Mouse

## Antibody description

Rabbit polyclonal antibody to TMEM119

## Preparation

This antigen of this antibody was synthetic peptide within human tmem119 aa 11-52 / 283.

## Formulation

Liquid, 1\*TBS (pH7.4), 0.2% BSA, 50% Glycerol. Preservative: 0.05% Sodium Azide.

## Storage

Store at +4°C after thawing. Aliquot store at -20°C. Avoid repeated freeze / thaw cycles.

## Clonality

Polyclonal

## Ig Type

Rabbit IgG

## Applications

WB, ICC, FC

## Dilutions

WB: 1:500-1:2,000

ICC: 1:50-1:100

FC: 1:100-1:500

## Validations

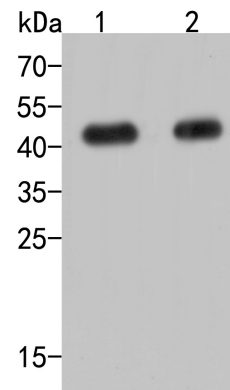


Fig1:: Western blot analysis of TMEM119 on different lysates. Proteins were transferred to a PVDF membrane and blocked with 5% NFDM/TBST for 1 hour at room temperature. The primary antibody ( 1/500) was used in 5% NFDM/TBST at room temperature for 2 hours. Goat Anti-Rabbit IgG - HRP Secondary Antibody (HA1001) at 1:200,000 dilution was used for 1 hour at room temperature.; Positive control;; Lane 1: Mouse brain tissue lysate; Lane 2: Mouse cerebellum tissue lysate

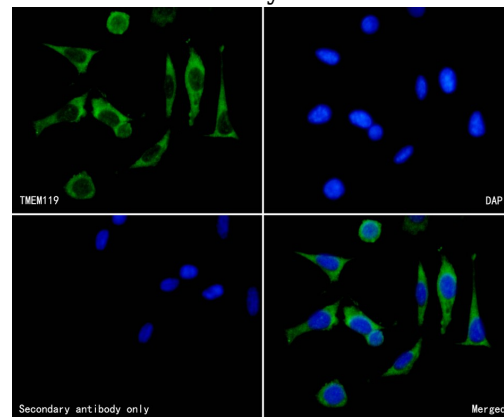
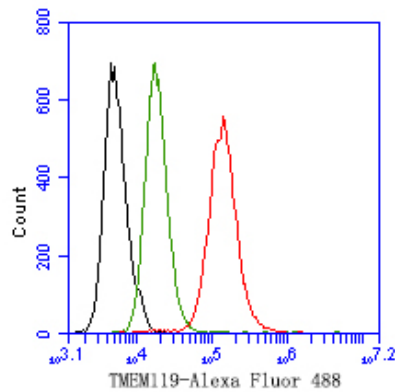


Fig2:: ICC staining of TMEM119 in SH-SY5Y cells (green). Formalin fixed cells were permeabilized with 0.1% Triton X-100 in TBS for 10 minutes at room temperature and blocked with 10% negative goat serum for 15 minutes at room temperature. Cells were probed with the primary antibody ( 1/50) for 1 hour at room temperature, washed with PBS. Alexa Fluor®488 conjugate-Goat anti-Rabbit IgG was used as the secondary antibody at 1/1,000 dilution. The nuclear counter stain is DAPI

# Anti-TMEM119 antibody



Catalog Number: 176611



(blue).

Fig3;; Flow cytometric analysis of TMEM119 was done on SH-SY5Y cells. The cells were fixed, permeabilized and stained with the primary antibody ( 1ug/ml) (red) compared with Rabbit IgG, monoclonal - Isotype Control (green). After incubation of the primary antibody at +4°C for 1 hour, the cells were stained with a Alexa Fluor®488 conjugate-Goat anti-Rabbit IgG Secondary antibody at 1/1,000 dilution for 30 minutes at +4°C (dark incubation). Unlabelled sample was used as a control (cells without incubation with primary antibody; black).